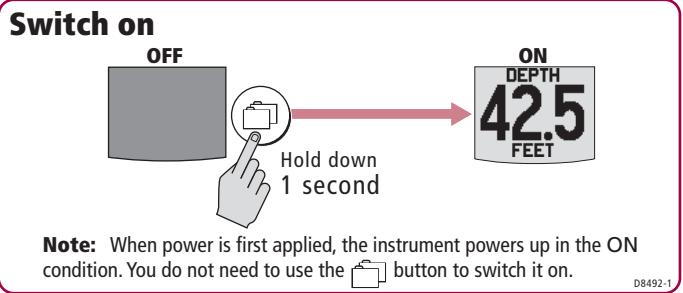
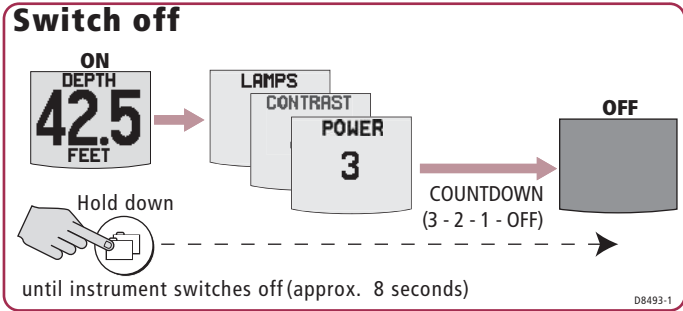
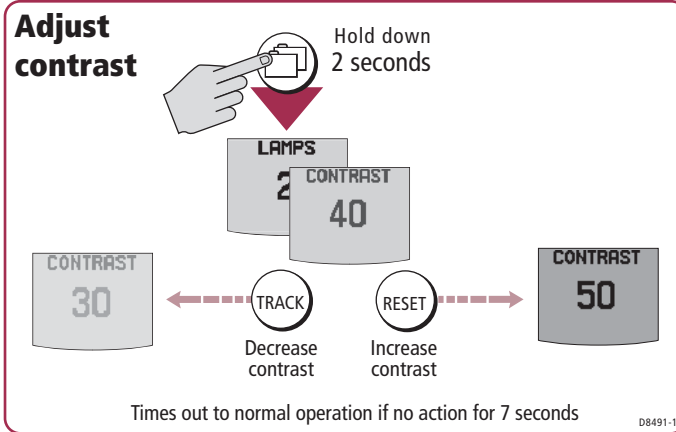
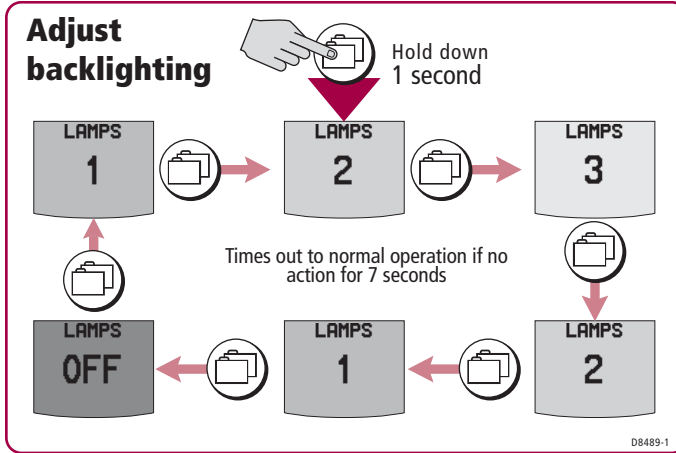


Switch off/on



Adjust backlighting/contrast

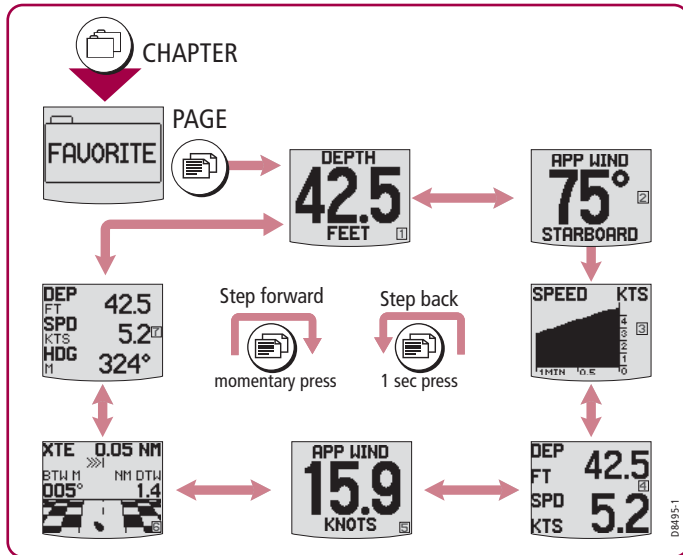


Raymarine®

ST60+ Graphic Display



Select Favorite pages

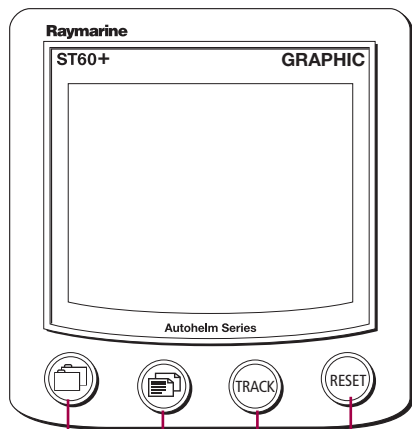


Quick Start Guide

Raymarine®

Raymarine Ltd, Quay Point, Northarbour Road, Portsmouth PO6 3TD, UK +44 (0) 23 9269 3611
 Raymarine, Inc, 21 Manchester Street, Merrimack, NH 03054, USA Toll Free: 800-539-5539
 Document number: 86121-1 +1 603-881-5200
 Date: December 2005

General operation



Selects the required **PAGE**.

TRACK
Gives access to track mode. In track mode you can:
- Hold down for 1 second to advance to the next waypoint.
- Press to leave track mode.

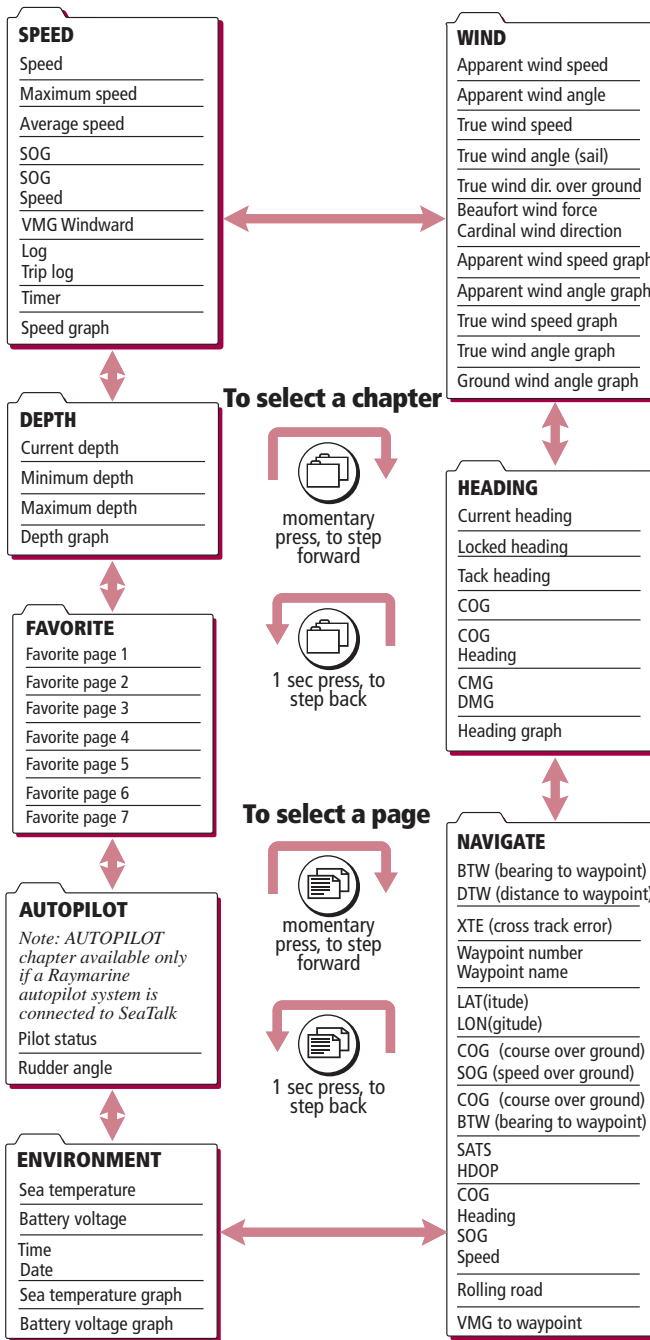
When an adjustable value is displayed, press to decrease the value.

RESET
When resettable data are displayed, hold down for 3 seconds to reset the data to the current value.

When an adjustable value is displayed, press to increase the value.

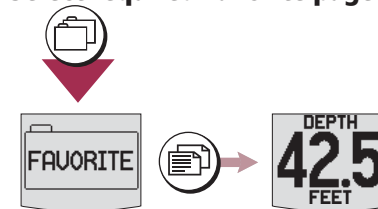
Selects the required **CHAPTER**. Also gives access to backlight adjust, contrast adjust and power on/off modes (see overleaf).

Selecting chapters & pages



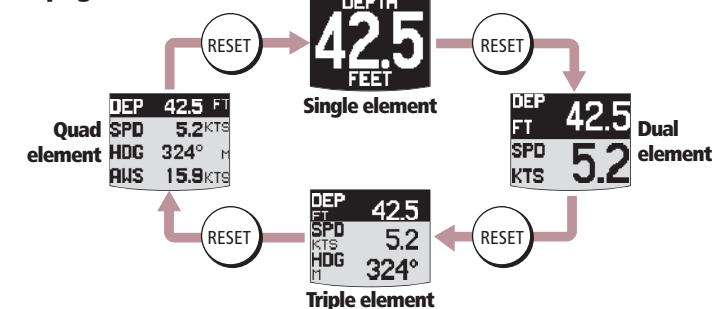
Setting up Favorite pages

1. Select required Favorite page

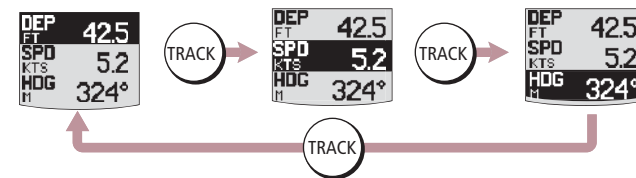


2. Enter Favorite set up TRACK + RESET 2 seconds

3. Select the required page format



4. Highlight the line you want to set up



5. Select the required data in the highlighted line

