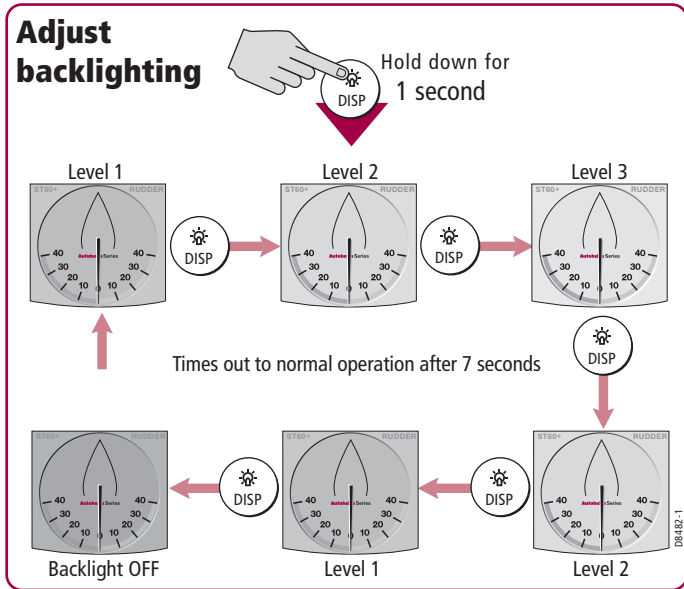


Adjust backlighting



Raymarine®

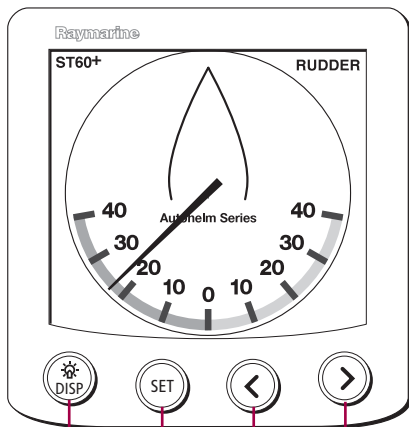
ST60+ Rudder Angle Indicator Instrument



Quick Start Guide

Raymarine®

General operation



DISP

Gives access to backlight adjust and power on/off modes (see overleaf).

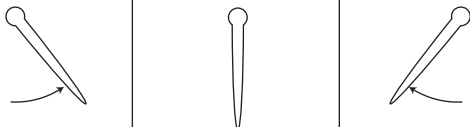
SET < >

Used during calibration. See *Owner's Handbook*.

Wheel turn



Rudder direction



Instrument indication



D8483-1

Switch off & on

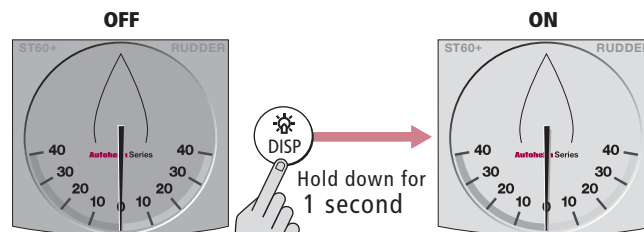
Switch off



until instrument switches off (approx. 7 seconds)

D8485-1

Switch on



Note:

When power is first applied, the instrument powers up in the ON condition. You do not need to use the DISP button to switch it on.

D8484-1