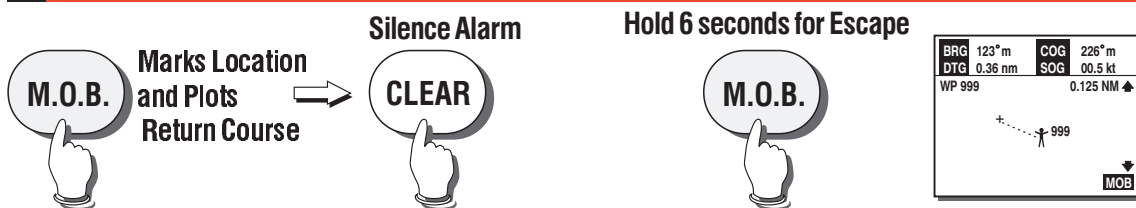


GENERAL OPERATION

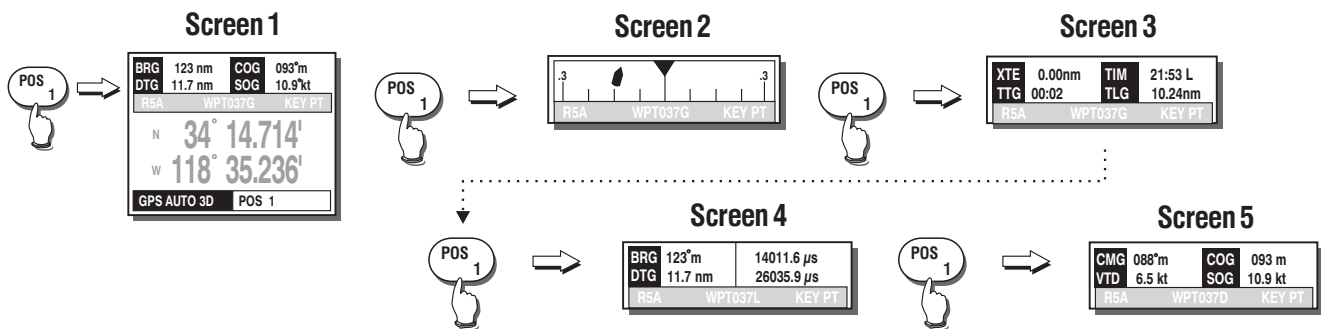
Turning On/Off Backlighting



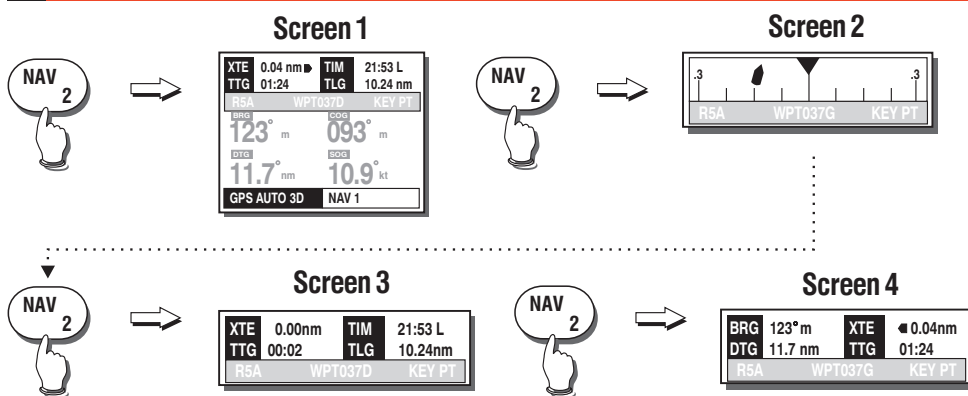
Man Overboard



Show Present Position

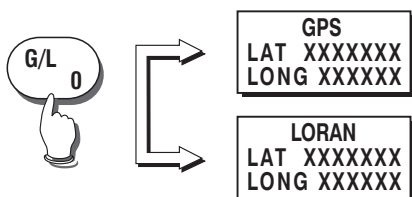


Navigation

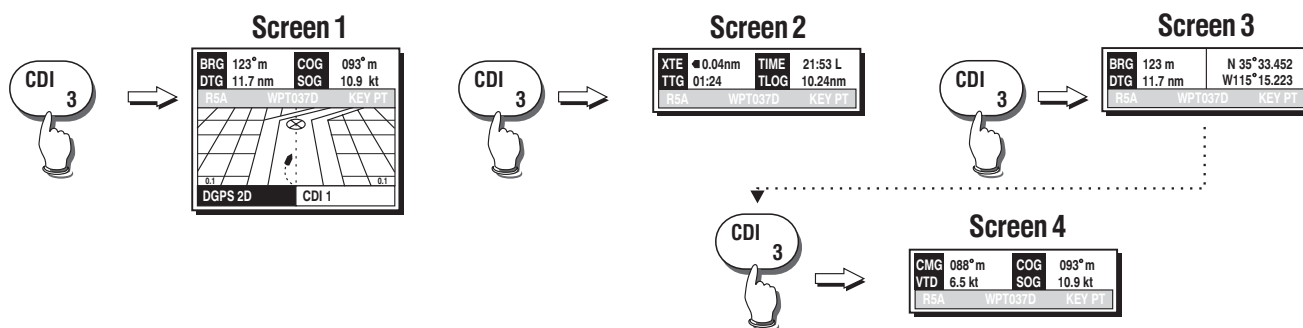


GENERAL OPERATION CONTINUED

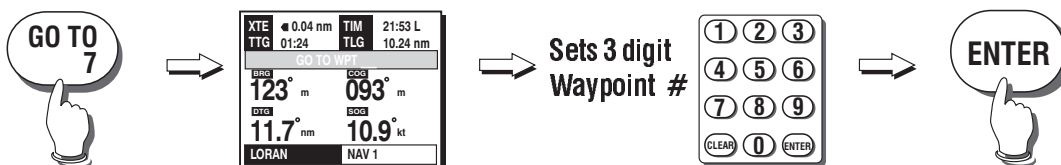
GPS/Loran Selection



Course Deviation Indicator (XTE)



Navigating With Waypoints



Marking Events



PLOT

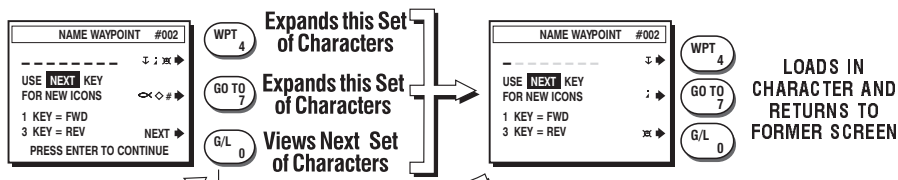
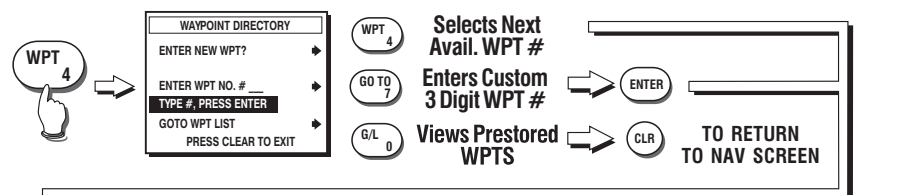


GENERAL OPERATION CONTINUED

Alarms



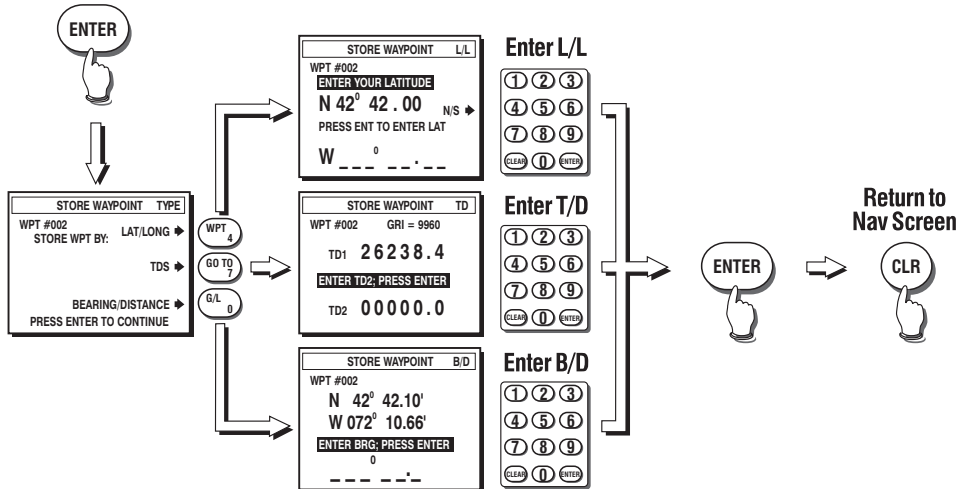
ENTERING WAYPOINTS



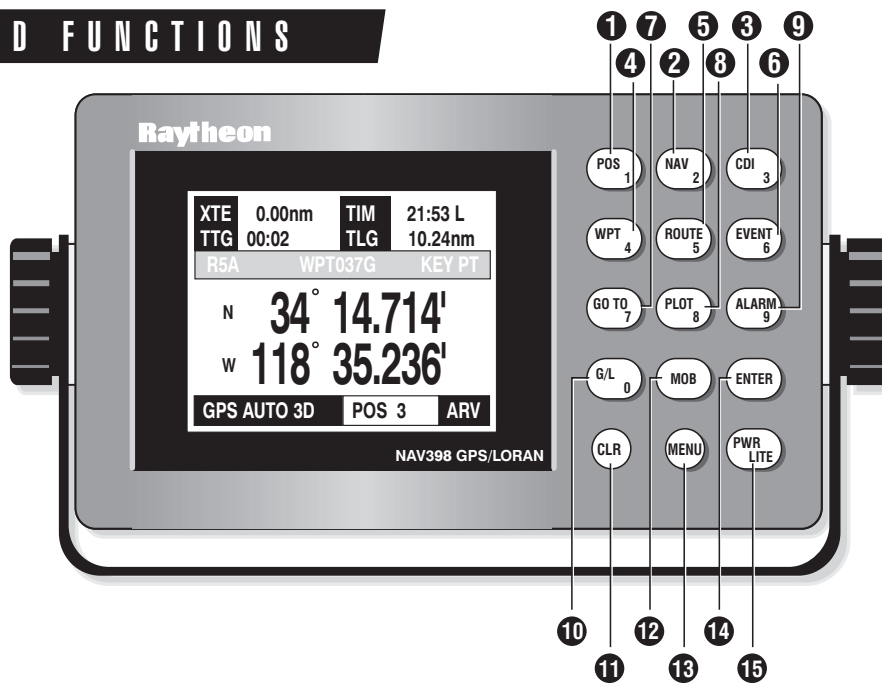
When Name is completed

Each time you select NEXT a new set appears

↕	A	D	G	J	M	P	S	V	Y	2	5	8	
;	B	E	H	K	N	Q	T	W	Z	3	6	9	
✕	#	C	F	I	L	O	R	U	X	1	4	7	0



KEYPAD FUNCTIONS



KEY SYMBOL	FUNCTION
1 POS ₁	Selects digit 1; selects Position displays.
2 NAV ₂	Selects digit 2; selects NAVigation displays.
3 CDI ₃	Selects digit 3; selects a Waypoint as a destination.
4 WPT ₄	Selects digit 4; selects Waypoint entry function.
5 ROUTE ₅	Selects digit 5; selects Route functions.
6 EVENT ₆	Selects digit 6; Memorizes ship's present position into designated Waypoint memory.
7 GO TO ₇	Selects digit 7; selects destination waypoints.
8 PLOT ₈	Selects digit 8; selects Plot Mode display.
9 ALARM ₉	Selects digit 9; Alarm menu.
10 G/L ₀	Selects digit 0; Selects Loran C or GPS operations.
11 CLR	Reverts to Main menu or POS display; resets numeric values to 0; silences audio beeper.
12 MOB	Selects Man-Overboard special alarm function.
13 MENU	Selects manu operations.
14 ENTER	Accepts data for entry.
15 PWR/LITE	Turns power On/Off; activates Contrast/Lite menu.