



CHARTPLOTTER NAVIGATION

- Support for professional quality Navionics® Gold vector charts on CompactFlash
- Navionics Fish n' Chip bathymetric chart support
- 256 color high resolution display provides paper chart like clarity
- Graphical compass steering display
- Auto Range mode intelligently maintains your vessel and your waypoint on the best chart scale while underway
- Animated tides and currents display
- On screen VHF DSC position reports (with compatible DSC VHF via NMEA)
- AIS Target tracking (external AIS receiver required)



Unlimited waypoint, route and track storage using CompactFlash cards



Optional Alphanumeric Keypad: alternative method for inputting waypoints and names



Connect an optional Raystar GPS Satellite Differential (WAAS/EGNOS) Sensor and choose Navionics® Gold charts to transform any C-Series display into an accurate and detailed GPS charting system.



Digital Sounder Module

HD DIGITAL FISHFINDER TECHNOLOGY

Our patented HD Digital technology enables our digital fishfinders to instantly adapt to changing water and seabed conditions, delivering a dramatically clearer picture than ordinary analog fishfinders. Plus HD Digital technology enables true "hands-free" automatic operation for an optimal fishfinder display at all times.

- Raymarine's patented HD Digital fishfinder technology using a remotely mounted Digital Sounder Module
- Hands-free HD Digital technology automatically adjusts more than 220 sonar parameters per second and virtually eliminates clutter
- HD Digital adaptive receiver technology targets fish and bottom structure with amazing clarity
- 600 or 1000 Watt power output with dual frequency 200/50 KHz operation
- Bottom lock, A-Scope and zoom modes
- Choose the 600 Watt DSM30 or the 1000 Watt DSM300 Digital Sounder Module
- Full range of high and ultra high performance transducers available



SR50 Receiver

With Raymarine and SIRIUS Marine Weather you can enjoy the comfort and peace of mind of having the latest weather forecasts at your fingertips. Through a partnership with WSI, the industry leader in weather forecasting and data products, SIRIUS Marine Weather provides high quality and comprehensive weather information, delivered right to your vessel.

- **Anglers advantage:** High resolution satellite sea surface temperature observations
- **Weather Radar:** Animated WSI NowRad® weather radar forecasts
- **Surface Pressure:** Animated pressure contours and frontal boundaries
- **Wind Forecasts:** Animated wind forecasts using wind barbs or arrows
- **Bouy Reports:** Weather buoy and weather station icons provide surface observation reports
- **Marine Warnings:** Forecasts at your vessel or cursor position include Marine Zone Forecasts, Tropical Statements, Marine Warnings and Watchbox Warnings
- **Storm Cast:** Graphical indicators that predict the speed and intensity of an approaching storm cell
- **Coverage:** 48 contiguous states, most of Canada, Mexico extending hundreds of miles into the Atlantic and Pacific Oceans, the Gulf of Mexico, and Caribbean



UNMATCHED RADAR PERFORMANCE

- Radar/chart overlay
- MARPA (Mini-Automatic-Radar-Plotting-Aid) target tracking
- Waypoint navigation and multiple waypoint overlay
- Low receiver noise figure (less than 5 dB)
- Auto GST™ fully automatic gain, sea clutter and tune control for real hands off operation
- Advanced microprocessor controlled transmitter receiver features 8 pulse width/PRF settings, providing enhanced target returns through every range scale

Choose an optional radome or open array antenna and a C-Series display to create a powerful radar system.

RADOMES

- Choice of 2kW (18") or 4kW (24") models
- Lightweight and compact
- Minimal power consumption

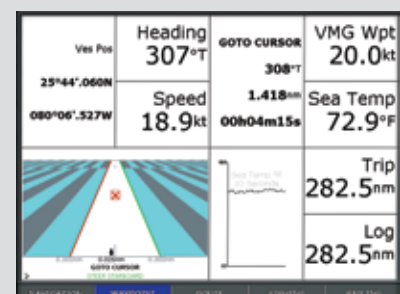


Open Array

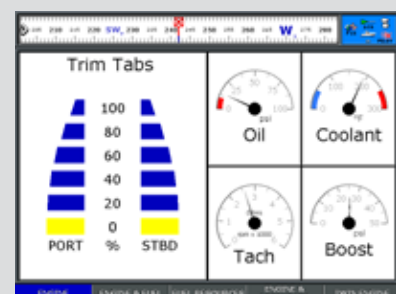
- Choice of 4kW and 10kW with 4ft or 6ft arrays
- Narrow horizontal beam widths for enhanced target separation and better detection of small targets

SMART HEADING SENSOR

For best radar overlay and MARPA performance choose the gyro enhanced Smart Heading Sensor or connect to Raymarine "G" version SmartPilot autopilot systems



Custom Data Displays
C-Series instrument displays can be customized with multiple combinations of graphical, digital and analog displays



Engine and Instrument Data
Keep track of engine performance with C-Series virtual engine instruments. Using NMEA 2000, C-Series displays can network with electronic engine instrument systems trim tabs and gensets.

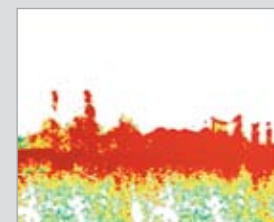


AIS and NavTex Support
AIS (Automatic Identification System) support using an external AIS Receiver (NMEA 0183 compatible receiver required). Overlay and track AIS targets on the chartplotter display. Plus C-Series now supports NAVTEX data from NMEA 0183 compatible NAVTEX receivers.

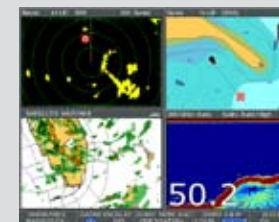
HD Digital Sounder technology virtually eliminates clutter. The 256-color display and digital sonar technology shows fish and bottom structure with amazing clarity



Ordinary Fishfinders
The analog fishfinder "sees" the wreck, but the image lacks detail.



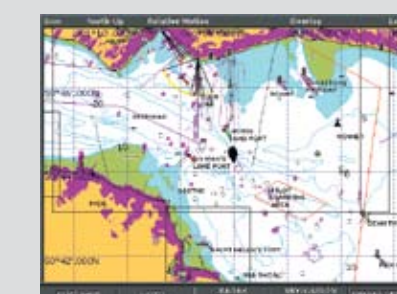
Raymarine HD Digital
The HD Digital fishfinder brings the wreck into clear focus. The protrusions on the right are the ship's guns.



Live Weather
View and animate weather forecasts in a full screen or within a window alongside radar, chartplotter and fishfinder functions.



Radio Tuner Controls
Tune in SIRIUS Radio channels directly through a C-Series display. Enjoy over 130 channels of original satellite radio programming including commercial free music, sports, news, talk and more.



Radar/Chart Overlay
Compare and reconcile radar targets with chart objects and experience true radar/chart integration.





COMPLETE NAVIGATION AND CONTROL

With inputs for GPS sensor, radar and digital sounder module, C-Series Multifunction Navigation Displays are easily transformed into a navigation system that's just right for you.

MULTIFUNCTION

- Configure any C-Series display as a single function stand-alone chartplotter, digital fishfinder or radar
- Build an all in one chartplotter / fishfinder / radar system

INTUITIVE

- The intuitive C-Series interface puts you in command. Simply "Page" through your choice of displays or create custom windows of any combination of chartplotter, radar, digital fishfinder or instrumentation.

DISPLAY TECHNOLOGY

- Direct sunlight viewable
- High resolution 256 color displays
- Excellent contrast and a wide viewing angle
- Very low profile flush mounting for a clean unobtrusive helm
- Rugged and waterproof (CFR46)

MODEL LINE UP

Three display sizes to choose from



C120 12.1" Display
C80 8.4" Display
C70 6.5" Display



Chartplotter
Paper like chart clarity using Navionics® Gold



Fishfinder
Patented Raymarine HD Digital™ sonar technology



Radar
Unmatched radar performance



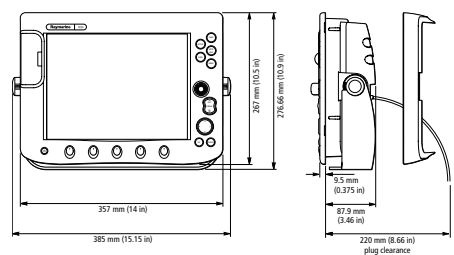
All in one



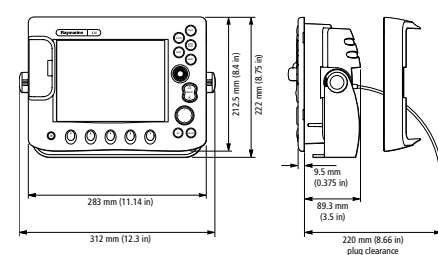
	C120	C80	C70
Weight	6.6 lbs (3.0kg)	4lbs (1.8kg)	2.6lbs (1.2kg)
Display Size	12.1"	8.4"	6.5"
Voltage range	10.7–32 volts (12/24v nominal)	10.7–32 volts (12/24v nominal)	10.7–32 volts (12/24v nominal)
Power consumption	12 Watts	10 Watts	9 Watts
Mounting methods	Bracket or console mount	Bracket or console mount	Bracket or console mount
Operating temperature	-10°C to 50°C	-10°C to 50°C	-10°C to 50°C
Waterproofing	CFR46 standard	CFR46 standard	CFR46 standard
Display type	Color TFT LCD	Color TFT LCD	Color TFT LCD
Display resolution	800 x 600 pixels (SVGA)	640 x 480 pixels (VGA)	640 x 480 pixels (VGA)
Display colors	256	256	256
Direct sunlight visibility	Yes	Yes	Yes
Interfaces	1 NMEA 0183 input, 1 NMEA 0183 output, Raymarine SeaTalk, Raymarine SeaTalk2, NMEA 2000 Port, DSM Echo Sounder Input, Radar Input		

C-Series Ordering Information	
Part #	Description
E02022	C120 12.1" Multifunction Navigation Display
E02020	C80 8.4" Multifunction Navigation Display
E02018	C70 6.5" Multifunction Navigation Display

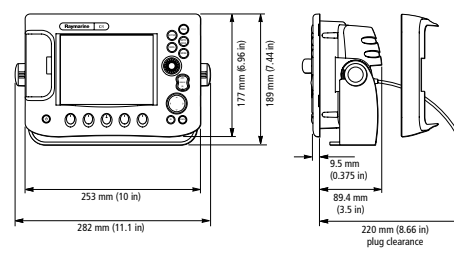
C120 Dimensions



C80 Dimensions



C70 Dimensions



Multifunction Navigation Displays

- C70 6.5" Display
- C80 8.4" Display
- C120 12.1" Display

