

Raymarine®

DIGITAL RADAR

HD & Super HD Digital Radar

New



RADAR SCANNERS FOR



E | S E R I E S



G | S E R I E S

HD DIGITAL™ RADAR

Raymarine's HD Digital technology brings radar users the power of digital signal processing with a truly adaptive transmitter and receiver that automatically adjusts to changing environmental and sea conditions. HD Digital radar delivers a dramatically clearer radar picture with crisp, well-defined contact echoes and life-like target presentation. HD Digital radar's high-speed digital processing detects weak and distant contacts automatically, while virtually eliminating clutter and noise.

HD DIGITAL FEATURES:

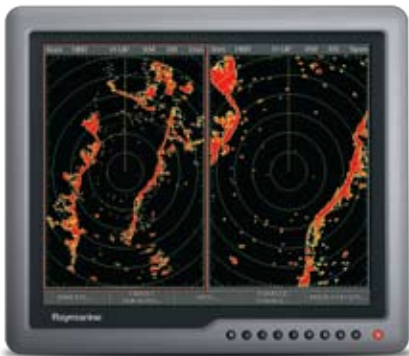
- Adaptive digital receiver automatically adjusts to changing environmental and sea conditions for a dramatically clearer picture
- Fast digital receiver processor
- 265 color multi-level display with selectable color palettes.
- Automatic harbor, coastal, offshore and buoy operating modes
- Dual-range mode allows you to monitor both long and short ranges simultaneously with only one scanner and one display
- Thin interconnect cable and remotely mounted voltage converter module



SUPER HD DIGITAL™ RADAR

More than just an evolution in radar technology, Super HD Digital radar from Raymarine is a quantum leap into the future of marine radar. Using highly advanced digital signal processing, Super HD Digital radars surpass conventional radar systems with incredibly detailed target resolution and fully automatic operation.

Super HD Digital radar has much greater dynamic range than conventional radar. This dramatic increase in dynamic range enables the digital receiver to acquire and process vast amounts of echo information that is normally lost by conventional analog radar systems. Super HD Digital technology then uses a powerful processor to intelligently isolate and identify true radar targets, while simultaneously eliminating unwanted sea clutter. The result is a dramatically clearer radar display.



DUAL RANGE MODE

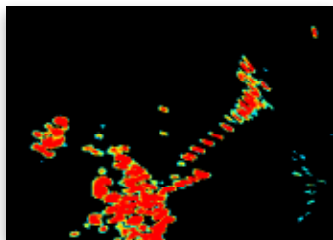
SUPER HD DIGITAL FEATURES

All the features of HD Digital Radar plus:

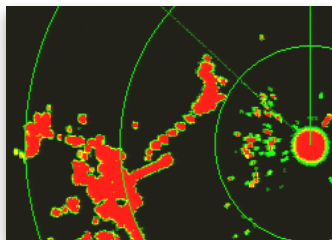
- Twice the performance of conventional radar systems of the same power and size
- Advanced Super HD Digital signal processing reduces the effective antenna beam width, enabling increased resolution and performance

TARGET SEPARATION: PIER & PILES

Raymarine Super HD Digital, 4kW, 4'



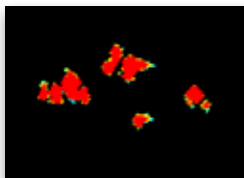
12kw, 6' Analog Radar System



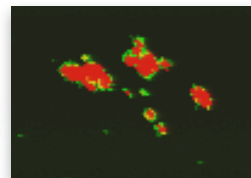
Raymarine Super HD Digital accurately identifies small targets. Range: 3/4 (.75) NM Scale

MAP-LIKE CLARITY: ISLES OF SHOALS

Raymarine Super HD Digital, 4kW, 4'



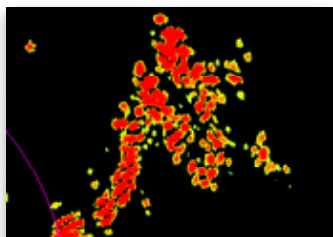
12kw, 6' Analog Radar System



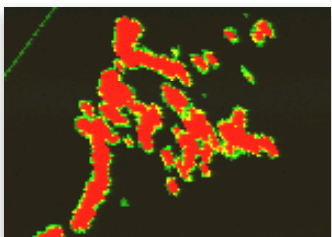
Target Separation on longer range scales (6 NM) is greatly improved

COASTLINE DETAIL: SUPER HD DIGITAL VS. ANALOG

Raymarine Super HD Digital, 4kW, 4'



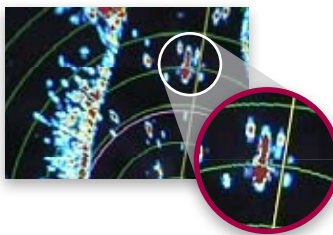
12kw, 6' Analog Radar System



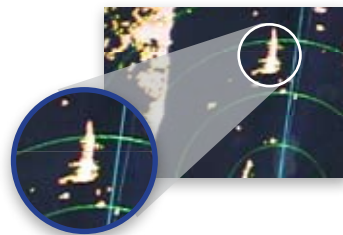
Super HD accurately depicts the shoreline. Range: 3 NM Scale

25KW RADAR COMPARISON

Raymarine 4kW 4' Super HD Digital Radar



25kW 8.5' commercial radar



Target Separation on longer range scales (6 NM) is greatly improved



HD and Super HD Digital radars are compatible with G-Series Navigation systems and E-Series multifunction displays (Requires E-Series version 4 software or higher)

SUPER HD DIGITAL OPEN ARRAY SPECIFICATIONS

| POWER | 4kW, 48" Super HD Digital Open Array 4kW, 72" Super HD Digital Open Array | 12kW, 48" Super HD Digital Open Array 12kW, 72" Super HD Digital Open Array |
|-----------------------------|--|--|
| Nominal Voltage (volts DC) | 12v, and 24v, systems | 12v and 24v systems |
| Absolute voltage range | 10.8-32v DC | 10.8-32v DC |
| ENVIRONMENTAL | | |
| Temperature range | -10°C to +55°C Operating -20°C to +70°C Non-operating | -10°C to +55°C Operating -20°C to +70°C Non-operating |
| Humidity | Up to 95% | Up to 95% |
| Waterproofing standard | IPX6 | IPX6 |
| Product Weight lbs(kg) | 48": 56.4 lbs (25.6 kg) 72": 63.9 lbs (29 kg) | 48": 56.4 lbs (25.6 kg) 72": 63.9 lbs (29 kg) |
| SCANNER FEATURES | | |
| Receiver Type | Super HD Digital | Super HD Digital |
| Maximum range scale | 72nm | 72nm |
| Transmitter frequency | 9420 +/- 20 MHz | 9420 +/- 20 MHz |
| Peak power output | 4kW | 12kW |
| Pulse length/PRF | 8 (auto target/expand) | 8 (auto target/expand) |
| Horizontal beam width -3 dB | Adjustable to < 1° | Adjustable to < 1° |
| Vertical beam width -3dB | 25° | 25° |
| Rotation rate | 24 rpm | 24 rpm |

HD DIGITAL OPEN ARRAY SPECIFICATIONS

| POWER | 4kW, 48" Digital Open Array | 4kW, 72" Digital Open Array |
|-----------------------------|--|--|
| Nominal Voltage (volts DC) | 12v, and 24v systems | 12v, and 24v systems |
| Absolute voltage range | 10.7-32v DC | 10.7-32v DC |
| ENVIRONMENTAL | | |
| Temperature range | -10°C to +55°C Operating -20°C to +70°C Non-operating | -10°C to +55°C Operating -20°C to +70°C Non-operating |
| Humidity | Up to 95% | Up to 95% |
| Waterproofing standard | IPX6 | IPX6 |
| Product Weight lbs(kg) | 48": 56.4 lbs (25.6 kg) | 72": 63.9 lbs (29 kg) |
| SCANNER FEATURES | | |
| Receiver Type | HD Digital | HD Digital |
| Maximum range scale | 72nm | 72nm |
| Transmitter frequency | 9405 +/- 20 MHz | 9405 +/- 20 MHz |
| Peak power output | 4kW | 4kW |
| Pulse length/PRF | 8 (auto target/expand) | 8 (auto target/expand) |
| Horizontal beam width -3 dB | 1.9° | 1.15° |
| Vertical beam width -3dB | 25° | 25° |
| Rotation rate | 24 rpm | 24 rpm |

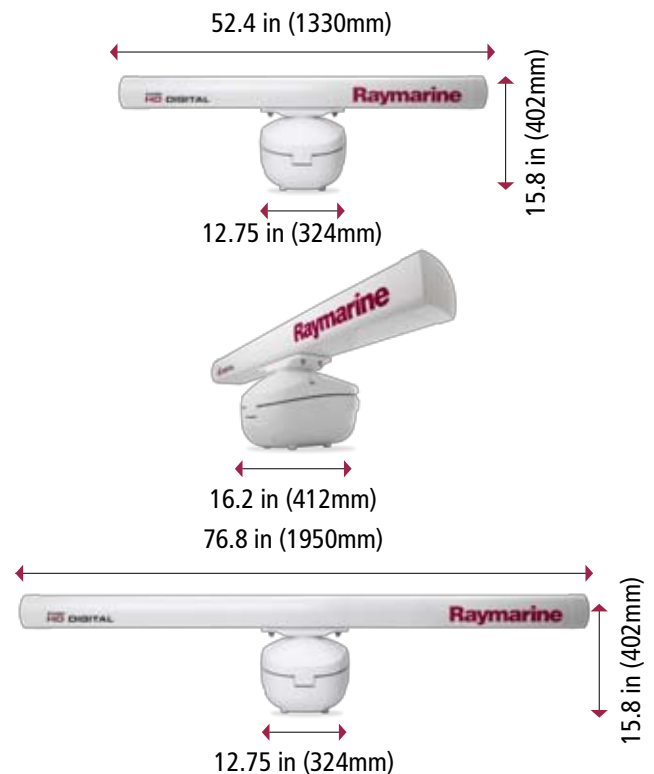
SUPER HD DIGITAL ORDERING INFORMATION

| PART # | DESCRIPTION |
|--------|--|
| T52085 | RA1048SHD 4kW 48" Super HD Digital Open Array with 15m cable |
| T52087 | RA1072SHD 4kW 72" Super HD Digital Open Array with 15m cable |
| T52086 | RA3048SHD 12kW, 48" Super HD Digital Open Array with 15m cable |
| T52088 | RA3072SHD 12kW, 72" Super HD Digital Open Array with 15m cable |

HD DIGITAL ORDERING INFORMATION

| PART # | DESCRIPTION |
|--------|--|
| T52071 | RA1048HD 4kW 48" HD Digital Open Array with 15m cable |
| T52074 | RA1072HD 4kW, 72" HD Digital Open Array with 15m cable |

DIMENSIONS



Raymarine®

Raymarine Incorporated
21 Manchester Street
Merrimack, NH 03054
USA
Tel: 603.881.5200
Fax: 603.864.4756
www.raymarine.com

Raymarine plc
Anchorage Park
Portsmouth, Hampshire PO3 5TD
United Kingdom
Tel: +44 (0)23 9269 3611
Fax: +44 (0)23 9269 4642
www.raymarine.com

Additional information, specifications and interactive product tours available online at www.raymarine.com



Product specifications subject to change without notice