

AUTOPILOT

NEW SMARTPILOT X-SERIES

Sailing, fishing or cruising, SmartPilot X-Series (SPX Series) autopilots offer the sophisticated performance and innovative features that demanding skippers appreciate. At the core of the SmartPilot X-Series autopilots are of newly engineered course computers and the new ST70 color autopilot control head. This powerful combination of SmartPilot X-Series course computer technology and the elegant simplicity of the ST70 control head offers captains innovative new features, precision course keeping and reliable performance.

KEY FEATURES:

- New ST70 color control head option
- Pre-programmed automatic steering patterns for anglers
- Accurate course keeping without the need for a rudder reference sensor

NEW BELOW DECK SMARTPILOT X-SERIES

An extra crew member at your command, the SmartPilot X-Series range of autopilots offers a choice of several rugged course computer and powerful drive unit configurations to fit a wide range of vessels. At the heart of every system is the X-Series course computer. Each SmartPilot X-Series course computer is equipped with a rate gyro sensor for accurate performance using Raymarine's AST™ (Advanced Steering Technology). With AST, SmartPilots automatically learn the vessel's steering characteristics, offering simpler setup and improved course keeping.



NEW ST70 AUTOPILOT CONTROL HEAD

Raymarine autopilot control heads offer rugged versatility and ease of use. The all new ST70 color autopilot control head has advanced features and intuitive operation when combined with an SPX course computer.



ST70 Autopilot

DRIVE UNITS

Raymarine drive units are engineered for maximum performance and reliability. Drive units are available for hydraulic, mechanical and cable steered power and sail boats.



Hydraulic Drive Unit



Linear Drive Unit



NEW ST70 Autopilot
& X-10 course computer

NEW SMARTPILOT X-5 WHEEL AND TILLER PILOTS

The SmartPilot X-5 Wheel and SmartPilot X-5 Tiller Pilots combine SmartPilot X-Series technology and performance with easy-to-install, cockpit mounted autopilot drives.

NEW SMARTPILOT X-5 SPORT

Using an innovative helm-mounted drive unit, the SmartPilot X-5 Sport is an easy to install autopilot system for powerboats up to 30' in length.

TILLER PILOTS

Raymarine Tiller Pilots let you handle the sheets, while the pilot intelligently keeps the boat on track. Standard features include GPS waypoint navigation, Raymarine's intuitive 6-button Autohelm® keypad and a backlit LCD display.

WIRELESS CONTROLLERS

The "must have" upgrade to every Raymarine autopilot, the S100 and SmartController put wireless autopilot control in the palm of your hand.



SmartController



NEW SmartPilot X-5 Sport



ST6002 Control Head

INSTRUMENTS

Raymarine instruments have set the standard for integrated instrument systems. Designed to be both flexible and expandable using our innovative SeaTalk integration technology, Raymarine instruments offer a complete solution for every helm or cockpit.

KEY FEATURES

- Bright, bold, easy-to-read displays
- SeaTalk and SeaTalk^{ng} networking technology enables multiple display and repeater possibilities
- Seamless integration with Raymarine multifunction displays and autopilots

Smart Controller ▶



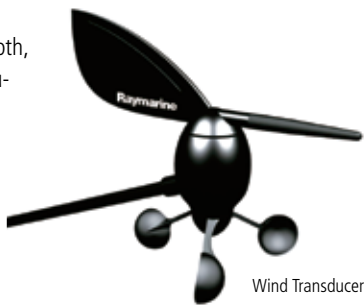
ST60 Plus ▲

ST40

A large-razor sharp display, along with simple three button controls, ST40 is the choice for boaters looking for high performance in a small package. The ST40 series offers dedicated depth, speed, wind and compass instruments as well the dual function (depth/speed) bidata display.

ST60 PLUS

Award winning ST60 Plus instruments are engineered for maximum visibility from every direction, day and night. Bright, backlit liquid crystal displays feature large, bold characters and color coded analog displays are easy to interpret at a glance. Years of experience combined with rigorous testing and standards ensures ST60 Plus will meet the demands of the most challenging conditions.



Wind Transducer

ST290

Our most advanced instrument system, ST290 combines big, bold, user-friendly displays with intelligent transducers. ST290 redefines the way on-board information is viewed, using a combination of remote controls and a customizable graphical display.



ST290 ▶

ST70 ▲

ST40 ▲

NEW ST70 MULTIFUNCTION

The ST70 multifunction instrument offers a brand new way of visualizing instrumentation. Featuring a graphical user interface and a bright, high resolution color display, ST70 provides unmatched versatility and ease of use. Designed for simple setup and extensive customization, ST70 offers an array of intuitive digital, analog, graphical and historical display options. ST70 systems are built on Raymarine's new SeaTalk^{ng} Next Generation data bus. A fast CAN based network, SeaTalk^{ng} enables the simple inter-connection of multiple ST70 instruments, transducers and NMEA2000 compatible devices.



VHF



RAYMARINE VHF RADIOS

From ultra compact to modular VHF radio systems, Raymarine VHF radios ensure that you will be heard loud and clear.

- DSC Digital Selective Calling available
- Rugged waterproof construction
- World class performance backed by a three year warranty

RAY218

The Ray218 is Raymarine's premier fixed mount VHF radio. Delivering exceptional performance and style, the Ray218 includes a long list of standard features including Class D Digital Selective Calling, a built-in hailer and chartplotter position polling. Expand the Ray218 with the powerful Raymic remote handset.

RAY240

The RAY240 is a modular VHF radio system with Digital Selective Calling, optional second station control, and hailer/fog horn capability. A convenient mobile phone style handset is combined with a remote speaker for crystal clear audio. The radio's standard Class D, Digital Selective Calling capability enables you to transmit vital information including your boat's identification, position and time of distress using Raymarine SeaTalk or NMEA 0183 data from your GPS.

RAY49 & 55

Simple and compact, the Ray49 and Ray55 are engineered to deliver reliable VHF performance in the harshest conditions. Both radios are fully submersible and are well-equipped with features like programmable scan, Tri watch and NOAA weather alert. They both offer Class D Digital Selective Calling capability as a standard feature.

SATELLITE TV



SATELLITE TELEVISION ANTENNA SYSTEMS

- HD (High Definition) television compatible models available*
- Dual LNB design supports multiple receivers
- Wide Range Search (WRS) for faster satellite I.D. and acquisition
- Dynamic Beam Tilting (DBT) technology for extreme weather and sea conditions.

37STV SATELLITE TV ANTENNA SYSTEM

Choose the HD ready 37STV for maximum performance in a small foot print. The space saving design of the 37STV makes this antenna ideal for vessels 25' and up. NMEA 0183 GPS interface ensures rapid satellite acquisition times. Fewer cables make installation much easier.

45STV SATELLITE TV ANTENNA SYSTEM

The 45STV Satellite Television Antenna System brings Raymarine performance and quality to on board entertainment. Featuring a stylish and compact dome, the 45STV provides uninterrupted satellite television reception in almost any condition.

60STV SATELLITE TV ANTENNA SYSTEM

The 60STV Satellite Television Antenna System from Raymarine offers unmatched antenna performance and style. Engineered for larger vessels (50' and up), the 60STV delivers enhanced signal acquisition for a clear picture and reliable access to hundreds of channels of digital entertainment. The high performance 60STV extends the range of satellite coverage and offers enhanced satellite tracking in regions prone to weaker satellite signals.

*DIRECTV service only for HD

RAYTECH RNS 6.1



ADVANCED PC NAVIGATION SOFTWARE SUITE

Powerful electronic charting system with support for Raster, Vector, 3D and Aerial Photo cartography.

KEY FEATURES

- Winner of the 2006 NMEA Best of Show Award
- NEW Super HD Digital Radar support
- Raster, Vector, 3D and Aerial Photo chartplotting
- Transform your PC into a Raymarine Multifunction Navigation display using SeaTalk^{hs} networking and Raymarine E-Series or G-Series
- Windows Vista and XP compatible

AIS



AIS250

Operating in the VHF maritime band, the AIS system enables the wireless exchange of navigation status between vessels and shore-side traffic monitoring centers.

KEY FEATURES

- Automatic Identification System (AIS) Receiver
- Improve collision avoidance
- Enhance situational awareness
- Track AIS targets with Raymarine C-Series, E-Series and G-Series multifunction displays
- Built in multiplexer for easy installation



WIRELESS MAN OVERBOARD SYSTEM

KEY FEATURES

- Wireless technology detects when a crew member goes out of range (typically 30 feet)
- For crew, family, friends and pets. Easy-to-wear and simple-to-use
- LifeTag can be manually activated by pressing the red MOB button
- Additional LifeTag system packs can extend the range of coverage on larger boats

WARNING: The Raymarine LifeTag System is an aid to crew safety only. It should not be relied upon as the vessel's main crew safety system. It is the responsibility of the Captain and all crew members to ensure that specific safety instructions and procedures are in place and obeyed in accordance with local safety requirements. Failure to operate this system in accordance with the operating instructions may result in unreliable or reduced system performance.

CAMERAS



CAM50 DOME CAMERA & CAM100 DAY/NIGHT CAMERA

High performance marine camera solutions transform Raymarine G-Series and E-Series displays into video observation systems

KEY FEATURES

- Ideal for monitoring blind spots, decks, engine room, salon and crew
- Plug and play with Raymarine G-Series and E-Series
- Excellent color reproduction
- High quality imager
- Reverse image versions available

Raymarine®

2008 PRODUCT GUIDE



NEW FOR 2008



G-Series



Super HD Digital
Radar



ST70 Autopilot
SmartPilot X-Series



DSM400

SEE WHERE NAVIGATION IS GOING™

Raymarine delivers the very best in marine navigation technologies and performance. From multifunction displays to autopilots and satellite television, this guide is designed to provide you with an informative overview of our complete line of marine electronics and technologies.



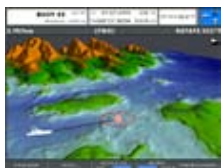
RAYMARINE SERIES OVERVIEW

- G-Series
- C-Series
- E-Series
- A-Series



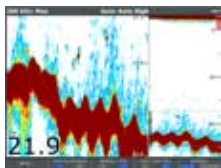
GPS CHARTPLOTTER

GPS combined with powerful vector chartplotting.



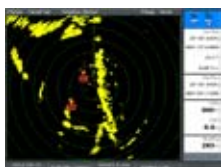
3D CHARTPLOTTER

Take charting to next level with 3D bathymetric charts, aerial photo overlay and panoramic port photos.



HD DIGITAL FISHFINDER

Patented digital sonar technology for precise targeting of fish and bottom structure.

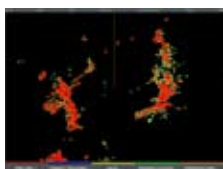


RADAR

Unmatched Raymarine performance and ease-of-use. Choose a high performance radome or open array.

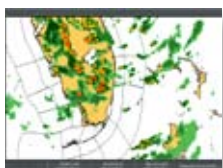


Raymarine



HD AND SUPER HD RADAR

Advanced digital signal technology and powerful processing redefines radar performance and target detection.



MARINE WEATHER

On board weather forecasts using SIRIUS Satellite Radio Marine Weather.



VIDEO INTEGRATION

Connect Raymarine marine cameras or digital television using a Raymarine Satellite TV antenna system.



SEATALK^{hs} NETWORKING

No hassle, fast plug and play networking. PC compatible with RayTech software.





TOTAL SYSTEM CONTROL

A single G-Series Command Center keyboard serves as the total point of control for the entire system. Expand your system with multiple keyboards or choose the wireless keyboard option for even greater flexibility.

HIGH DEFINITION NAVIGATION

Each G-Series marine display delivers brilliant color and a wide viewing angle, thanks to Raymarine's ultra bright sunlight viewable display technology. G-Series marine displays are available in 12, 15, 17 or 19" versions.

PERFORMANCE AND POWER

The rugged GPM400 is equipped with a powerful processor that is ten times faster than previous generation Raymarine navigation devices. An on board video graphics accelerator delivers super fast screen redraws and amazing video performance. Each GPM400 features pre-loaded Navionics Platinum cartography for all of North America.*

VIDEO AT YOUR COMMAND

The GVM400 video module integrates video monitoring seamlessly across the G-Series system using SeaTalk^{hs} networking protocol. The GVM400 features 4 composite video inputs for marine cameras or other on board video sources.

*GPM400 versions pre-loaded with charts for Europe and the southern hemisphere are also available.

THINK BIGGER

Our premier navigation system, G-Series is a multifunction helm solution that combines ultra bright displays, remote keyboards and powerful processors with network sensors for radar, fishfinder, GPS, weather and video.








HIGH POWER HD DIGITAL FISHFINDER

The ultimate weapon in the hunt for fish, the DSM400 delivers the power and performance serious offshore anglers demand. Operating at 1, 2 or a mighty 3 kilowatts of transmitting power, the DSM400 takes our patented HD Digital technology to whole new level.

SUPER HD DIGITAL™ RADAR

More than just an evolution in radar technology, Super HD Digital radar is a quantum leap into the future of marine radar. Using highly advanced digital signal processing, Super HD Digital radars surpass conventional radar systems with incredibly detailed target resolution and fully automatic operation



				
Marine Display & Keyboard	GPM400 Processor Module	Super HD Digital Radar	DSM400 Digital Sounder Module	GVM400 Video Module



◀ E120 12.1" Multifunction Display

NEW POWERFUL E-SERIES v4 FEATURES AND PERFORMANCE

- HD and Super HD Digital radar support with new digital radar color palettes, dual range operation and unmatched performance
- 3kW DSM400 HD Digital fishfinder option with support for 200, 50, 38 and 28kHz frequencies
- Improved chartplotting features, including higher resolution Navionics Platinum Plus chart support
- New display and integration features including NMEA2000 trim tab indicator displays
- New SIRIUS Satellite Radio integration. Tune in SIRIUS entertainment direct from the E-Series user interface

CHARTPLOTTER

E-Series combined with Navionics Platinum charts delivers improved situational awareness using 3D bathymetric charts, aerial photo charts and panoramic port photos.

MULTIFUNCTION NETWORKING

The super fast 100 megabit SeaTalk^{hs} network enables simple plug and play connection of multiple E-Series displays and peripherals.

ULTRA BRIGHT COLOR

Powerful backlighting combined with prismatic light enhancing display technology offers unmatched direct sunlight visibility.

E-SERIES RE-LOADED

Powerful multifunction displays, enhanced with v4 upgrades. E-Series combines 3D chartplotter, fishfinder, radar, video and marine weather in an easy to use networked navigation system.



E120 12.1" Multifunction Display ▲

VIDEO INTEGRATION

Display video from up to four remote sources including Raymarine's marine cameras and satellite TV systems.

MARINE WEATHER

Access up-to-the minute animated forecast information including weather radar, storm tracks, sea surface temperature, wind, surface pressure, wave heights, lightning and much more.

INSTRUMENT INTEGRATION

Connect with Raymarine's SeaTalk and SeaTalk^{ng} networks as well as NMEA 2000 compatible devices.

HD DIGITAL FISHFINDER

Enjoy Raymarine's patented HD Digital sonar technology using the powerful DSM300 sounder module.

RADAR

Raymarine radar technology delivers unmatched performance and ease-of-use. Choose from a wide selection of high performance radome and open array scanners.



E80 8.4"
Multifunction Display

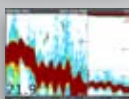


E120 12.1"
Multifunction Display

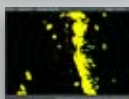
C | S E R I E S



CHARTPLOTTER



FISHFINDER



RADAR



WEATHER

 ALL IN ONE

KEY FEATURES:

- Multifunction
- High Resolution Sunlight Viewable Displays
- Intuitive User Interface
- Customizable Navigation Pages

AWARD WINNING NAVIGATION

Voted Best-In-Show by the National Marine Electronics Association and winner of the coveted DAME award, C-Series displays have defined a new standard in marine electronics.

MULTIFUNCTION NAVIGATION

Configure your C-Series display with any combination of GPS, HD Digital fishfinder, weather or radar by simply adding the appropriate sensors. The customizable C-Series user interface allows you to display up to four windows of applications simultaneously.

CHARTPLOTTER

Connect a Raystar Satellite Differential (WAAS/EGNOS) GPS sensor to transform any C-Series display into user friendly chartplotter. Navionics charts provide accurate and detailed vector cartography.

HD DIGITAL™ FISHFINDER

C-Series can target fish with amazing clarity when combined with a digital sounder module. The DSM300 and DSM30 feature Raymarine's exclusive HD Digital sonar technology.



C120 12.1" Multifunction Display ▲

SIRIUS WEATHER AND RADIO

Simply add the new Raymarine SR50 weather and satellite radio receiver for access to the latest graphical marine weather forecasts and over 130 channels of SIRIUS satellite radio entertainment.

RADAR

Raymarine radar technology delivers unmatched performance and ease-of-use. Standard radar features include radar/chart overlay and MARPA (mini automatic radar plotting aid).

INSTRUMENT INTEGRATION

Connect with Raymarine's SeaTalk and SeaTalk2 networks as well as NMEA 0183 devices. Plus C-Series displays are NMEA 2000 certified and support engine instrument integration.

AIS AND NAVTEX

AIS (Automatic Identification System) support using an external AIS receiver. Overlay and track AIS targets on the chartplotter and radar displays. Plus C-Series now supports NAVTEX data from NMEA 0183 compatible NAVTEX receivers.

		
<p>C70 6.5" Multifunction Display</p>	<p>C80 8.4" Multifunction Display</p>	<p>C120 12.1" Multifunction Display</p>

A | S E R I E S

BIG TECHNOLOGY, COMPACT DESIGN

Unlike entry level electronics, the Raymarine A-Series delivers big features and performance.



▲ A60 5.7" Display

▲ A65 6.5" Display

KEY FEATURES:

- Dual Function Chartplotter/Fishfinder
- HD Digital™ Fishfinder Technology
- Sunlight Viewable Color Displays
- Rugged Submersible Construction

A-SERIES HD DIGITAL FISHFINDERS FEATURE:

- 500 Watts RMS output power
- Dual frequency (50/200 kHz) for excellent inshore and offshore performance
- Hands-free HD Digital technology automatically adjusts more than 220 sonar parameters per second and virtually eliminates clutter

GPS CHARTPLOTTER

Accurate and fast chartplotting combined with Navionics seamless chart technology ensures a clutter free, yet detailed chart presentation with tides, currents, shaded depth contours, navigation aids, spot soundings and more.

DUAL FUNCTION

Configure the A65 and A60 as a chartplotter or a chartplotter/fishfinder with the addition of the DSM25 HD Digital sounder module.

Raymarine®

LIT82169 - 0108

Learn about all our new products. Go to www.raymarine.com