

A SERIES

Dual Function Chartplotter/Fishfinders

A60 - 5.7" Display

A65 - 6.5" Display



◀ A65 - 6.5" Dual Function Display

New



A60 - 5.7" Dual Function Display ▶

DUAL FUNCTION CHARTPLOTTER/FISHFINDERS

The A65 and the new A60 Dual Function displays are the perfect choice for center consoles and open cockpits. Both units are equipped with direct sunlight viewable color displays and are fully waterproof to the IPX-7 standard.



A60

- 5.7" Sunlight viewable display
- QVGA resolution (320 x 240 pixels)

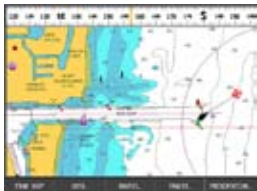
A65

- Larger 6.5" Sunlight viewable display
- VGA resolution (640 x 480 pixels)

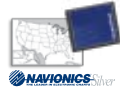
FEATURES

- Charts included! The A60 and A65 feature a Navionics® Silver chart of the entire continental U.S.
- RS12 12 Channel GPS Sensor included
- Rugged submersible construction (IPX-7 standard)
- Patented Raymarine HD Digital™ fishfinder technology
- Digital Fishfinder option using the DSM25 Digital Sounder (sold separately)
- The A60 or the A65 are offered as a GPS chartplotter or bundled with the DSM25 Digital Sounder Module

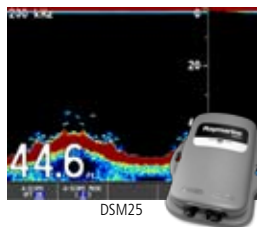
CHARTS INCLUDED



- Ready-to-go Navionics® Silver coastal cartography for the continental U.S. (including Great Lakes) on a single CompactFlash card. (US version only)
- Navionics XL9 Gold chart and Hot Maps compatible



HD DIGITAL™ FISHFINDER



- Raymarine HD Digital fishfinder technology
- 500 Watts RMS output power
- Dual frequency (50/200 kHz) for excellent inshore and offshore performance

HD DIGITAL

APELCO® TRANSDUCER OPTIONS FOR A-SERIES

Optional thru-hull and in-hull transducers available. Visit our website www.raymarine.com to learn more.



P79 In-hull



B744V Thru-hull

Raymarine Incorporated
21 Manchester Street
Merrimack, NH 03054
USA
Tel: 603.881.5200
Fax: 603.864.4756
www.raymarine.com

Raymarine plc
Anchorage Park
Portsmouth, Hampshire PO6 3TD
United Kingdom
Tel: +44 (0)23 9269 3611
Fax: +44 (0)23 9269 4642
www.raymarine.com

Additional information, specifications and interactive product tours available online at www.raymarine.com



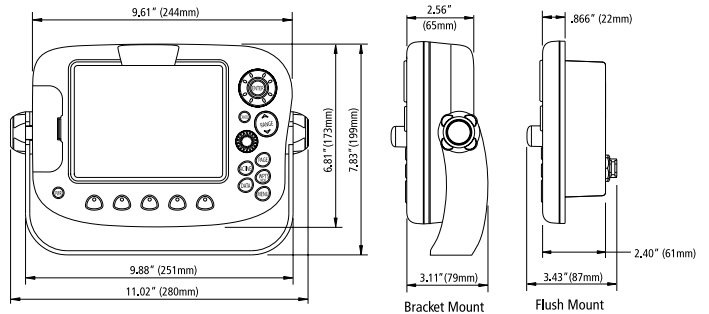
Product specifications subject to change without notice

SPECIFICATIONS

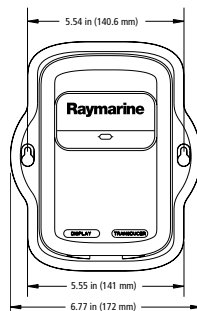
	A65	A60	DSM25
Weight	2.25 lbs (1.02 kg), dash mounted 3.09 lbs (1.40 kg), bracket mounted	2.25 lbs (1.02 kg), dash mounted 3.09 lbs (1.40 kg), bracket mounted	13.7 oz (0.388 kg)
Display	6.5 in Color TFT LCD 640 x 480 pixels (VGA)	5.7 in Color TFT LCD 320 x 240 pixels (QVGA)	N/A
Input Power	10-18 Volts DC (13.8V nominal)	10.7 - 18 Volts VDC (13.8VDC nominal)	Supplied by the A65/A60
Waterproofing	IPX-7; suitable for external mounting	IPX-7; suitable for external mounting	Submersible to IPX7, submersible to 1m for at least 30min
Cartography	Navionics Silver (U.S chart included), Gold and Hot Maps compatible	Navionics Silver (U.S chart included), Gold and Hot Maps compatible	Not applicable
GPS	12 Channel GPS Sensor Included	12 Channel GPS Sensor Included	Not applicable
Interfaces	NMEA0183 Input/Output, DSM25, RS12	NMEA0183 Input/Output, DSM25, RS12	A65/A60
Power Output	See DSM25	See DSM25	Adjustable to 500 Watts RMS
Frequency	See DSM25	See DSM25	Dual 200 or 50 kHz

DIMENSIONS

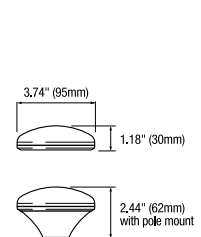
A65/A60 Dimensions



DSM25 Dimensions



RS12 Dimensions



A65/A60 & DSM25 Ordering Information

Part #	Description
E33020	A65 Chartplotter system with RS12 GPS (HD Digital Ready)
E33023	A65 Dual Function Chartplotter/Fishfinder System Pack (Includes A65, RS12 GPS, DSM25, and transom mount transducer)
E33025	A60 Chartplotter system with RS12 GPS (HD Digital Ready)
E33027	A60 Dual Function Chartplotter/Fishfinder System Pack (Includes A60, RS12 GPS, DSM25, and transom mount transducer)
E63070	DSM25 Digital Sounder Module for the A60/A65 (transducer sold separately)