

SOFTWARE

RayTechRNS 6.1

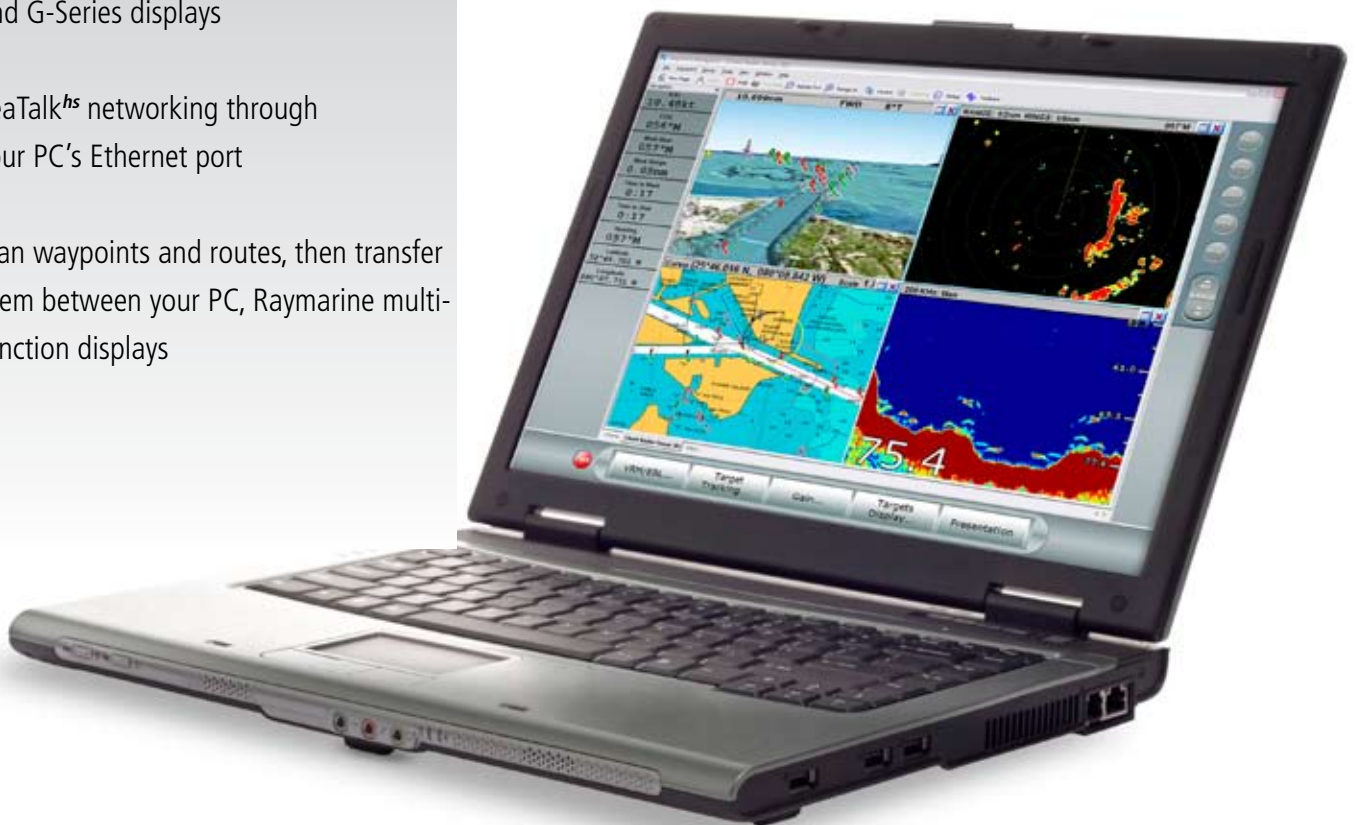
Advanced PC Navigation Software Suite

Bring your PC onboard and access radar, digital fishfinder, charts and navigation data instantly with Raymarine E-Series, and G-Series displays

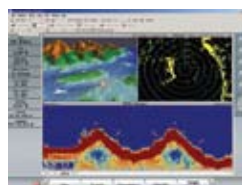
SeaTalk^{hs} networking through your PC's Ethernet port

Plan waypoints and routes, then transfer them between your PC, Raymarine multi-function displays

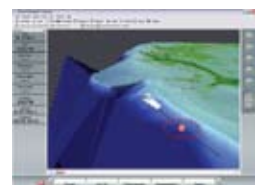
New



Overlay aerial photos on top of vector or raster charts



Network with Raymarine radars and HD Digital™ fishfinders



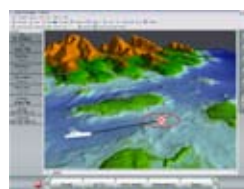
3D Navigation with Navionics Platinum Plus

NEW IN 6.1

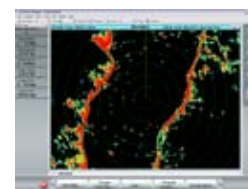
- Integration with Raymarine G-Series navigation systems through SeaTalk^{hs}
- Windows Vista compatibility
- Network with Raymarine's new HD and Super HD Digital radars
- Raymarine DSM400 HD Digital Sounder Module support
- AIS Target tracking through NMEA 0183 or SeaTalk^{hs}

KEY FEATURES

- A simple, Ethernet connection between the PC and Raymarine's SeaTalk^{hs} network allows the captain to access and share radar, HD Digital™ fishfinder, charts and navigation data instantly with Raymarine's E-Series and G-Series
- Customizable user interface
- Animated weather forecasts overlay
- Sea surface temperature and plankton data overlays (subscription required)
- Navigation and tactical sailing tools
- DataTrak time-based graphs
- Polar data collection and analysis
- Route optimization



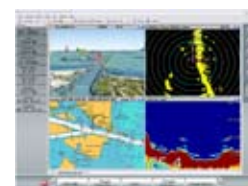
NEW 3D Charts using Platinum Plus



NEW Super HD Digital Radar Support



NEW AIS Target Tracking



Transform your PC in to a Raymarine Multifunction Navigation display

**RayTech PLANNER**

Limited version of RayTechRNS 6.1 software designed for planning and transferring waypoints and routes, between your PC and Raymarine chartplotters and multifunction displays.



RayTechRNS 6.1 is designed for Windows XP and Vista. Please visit www.raymarine.com for complete system requirements.

G-SERIES INTEGRATION

RayTechRNS 6.1 is designed to integrate with Raymarine's G-Series Navigation Systems. Network a RayTech enabled PC with G-Series to access charting, digital radar and fishfinder from the ships PC. Plus the versatile G-Series Marine Displays features additional DVI and VGA inputs for accessing the PC display directly from the helm.



RayTechRNS 6.1 Ordering Info.	
PART #	DESCRIPTION
E112111	RayTech RNS V6.1
E112112	RayTech RNS V6.1 Upgrade
E112113	RayTech Planner

Raymarine®

Raymarine Incorporated
21 Manchester Street
Merrimack, NH 03054
USA
Tel: 603.881.5200
Fax: 603.864.4756
www.raymarine.com

Raymarine plc
Anchorage Park
Portsmouth, Hampshire PO3 5TD
United Kingdom
Tel: +44 (0)23 9269 3611
Fax: +44 (0)23 9269 4642
www.raymarine.com

Additional information, specifications and interactive product tours available online at www.raymarine.com



Product specifications subject to change without notice