

## SOFTWARE

# RayTechRNS 6.1

## Advanced PC Navigation Software Suite

Bring your PC onboard and access radar, digital fishfinder, charts and navigation data instantly with Raymarine E-Series, and G-Series displays

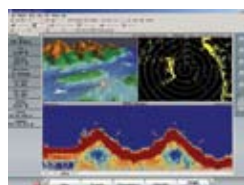
SeaTalk<sup>hs</sup> networking through your PC's Ethernet port

Plan waypoints and routes, then transfer them between your PC and Raymarine multifunction displays

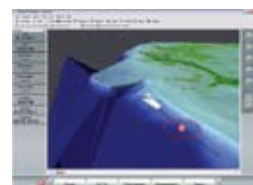
New



Overlay aerial photos on top of vector or raster charts



Network with Raymarine radars and HD Digital™ fishfinders



3D Navigation with Navionics Platinum Plus

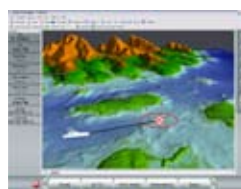
# RaytechRNS 6.1 Software

## NEW IN 6.1

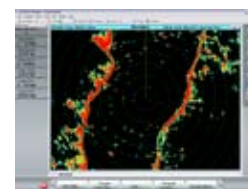
- Integration with Raymarine G-Series navigation systems through SeaTalk<sup>hs</sup>
- Limited Windows Vista compatibility\*
- Network with Raymarine's new HD and Super HD Digital radars
- Raymarine DSM400 HD Digital Sounder Module support
- AIS Target tracking through NMEA 0183 or SeaTalk<sup>hs</sup>
- Support for high resolution Navionics Platinum Plus charts

## KEY FEATURES

- A simple, Ethernet connection between the PC and Raymarine's SeaTalk<sup>hs</sup> network allows the captain to access and share radar, HD Digital™ fishfinder, charts and navigation data instantly with Raymarine's E-Series and G-Series
- Customizable user interface
- Animated weather forecasts overlay
- Sea surface temperature and plankton data overlays (subscription required)
- Navigation and tactical sailing tools
- DataTrak time-based graphs
- Polar data collection and analysis
- Route optimization



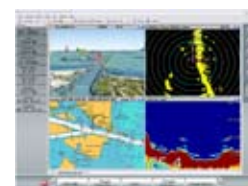
NEW 3D Charts using Platinum Plus



NEW Super HD Digital Radar Support



NEW AIS Target Tracking



Transform your PC into a Raymarine Multifunction Navigation display



## RayTech PLANNER

Limited version of RayTechRNS 6.1 software designed for planning and transferring waypoints and routes, between your PC and Raymarine chartplotters and multifunction displays.



## G-SERIES INTEGRATION

RayTechRNS 6.1 is designed to integrate with Raymarine's G-Series Navigation Systems. Network a RayTech enabled PC with G-Series to access charting, digital radar and fishfinder from the ship's PC. Plus the versatile G-Series Marine Displays features additional DVI and VGA inputs for accessing the PC display directly from the helm.



\*RayTechRNS 6.1 is designed for Windows XP and limited functionality on Windows Vista. Please visit [www.raymarine.com](http://www.raymarine.com) for complete system requirements and details on Windows Vista compatibility.

RayTechRNS 6.1 Ordering Info.	
PART #	DESCRIPTION
E112111	RayTech RNS V6.1
E112112	RayTech RNS V6.1 Upgrade
E112113	RayTech Planner

# Raymarine®

Raymarine Incorporated  
21 Manchester Street  
Merrimack, NH 03054  
USA  
Tel: 603.881.5200  
Fax: 603.864.4756  
[www.raymarine.com](http://www.raymarine.com)

Raymarine plc  
Anchorage Park  
Portsmouth, Hampshire PO3 5TD  
United Kingdom  
Tel: +44 (0)23 9269 3611  
Fax: +44 (0)23 9269 4642  
[www.raymarine.com](http://www.raymarine.com)

Additional information, specifications and interactive product tours available online at [www.raymarine.com](http://www.raymarine.com)



Product specifications subject to change without notice