

2009 PRODUCT GUIDE



NEW FOR 2009



C-Series
Widescreen



A-Series



ST70 Plus



DIGITAL

Digital Radomes

WHEN YOU ARE READY FOR BIGGER THINGS

Raymarine delivers the very best in marine navigation technologies and performance. From multifunction displays to autopilots and satellite television, this guide is designed to provide you with an informative overview of our complete line of marine electronics and technologies.



A - SERIES

C - SERIES WIDESCREEN

SERIES OVERVIEW



Best Suited For

Runabouts, smaller center consoles and sail boats

Medium size center consoles and sailboats. Large consoles

Available Display Sizes

5" - 6.4"

9" - 14"

Ultra Bright Display

3D Chartplotting



Digital and HD Digital Radar



HD Digital Fishfinder



Marine Weather and AIS



SeaTalk^{ng} and NMEA2000



Dual Display Network



Multi Display Network

Video Integration



Raymarine



RIES
RREEN

E - SERIES

G - SERIES



Cruising and
larger center
consoles

Larger offshore sport fishing,
cruising and sailing yachts

Premium sport fish yachts,
luxury cruising and sailing
yachts

4"

8.4" - 12"

12" - 19"





TOTAL SYSTEM CONTROL

A single G-Series Command Center keyboard serves as the total point of control for the entire system. Expand your system with multiple keyboards or choose the wireless keyboard option for even greater flexibility.

HIGH DEFINITION NAVIGATION

Each G-Series marine display delivers brilliant color and a wide viewing angle, thanks to Raymarine's ultra bright sunlight viewable display technology. G-Series marine displays are available in 12, 15, 17 or 19" versions.

PERFORMANCE AND POWER

The rugged GPM400 is equipped with a powerful processor that is ten times faster than previous generation Raymarine navigation devices. A built in video graphics accelerator delivers super fast screen redraws and amazing video performance. Each GPM400 features pre-loaded Navionics Platinum cartography for all of North America.*

VIDEO AT YOUR COMMAND

The GVM400 video module integrates video monitoring seamlessly across the G-Series system using SeaTalk^{hs} networking protocol. The GVM400 features 4 composite video inputs for marine cameras or other on board video sources.

*GPM400 versions pre-loaded with charts for Europe and the southern hemisphere are also available.

THINK BIGGER

Our premier navigation system, G-Series is a multifunction helm solution that combines ultra bright displays, remote keyboards and powerful processors with network sensors for radar, fishfinder, GPS, weather and video.





HIGH POWER HD DIGITAL FISHFINDER

The ultimate weapon in the hunt for fish, the DSM400 delivers the power and performance serious offshore anglers demand. Operating at 1, 2 or a mighty 3 kilowatts of transmitting power, the DSM400 takes our patented HD Digital technology to whole new level.

SUPER HD DIGITAL™ RADAR

More than just an evolution in radar technology, Super HD Digital radar is a quantum leap into the future of marine radar. Using highly advanced digital signal processing, Super HD Digital radars surpass conventional radar systems with incredibly detailed target resolution and fully automatic operation.



				
Marine Display & Keyboard	GPM400 Processor Module	Super HD Digital Radar	DSM400 Digital Sounder Module	GVM400 Camera Module



◀ E120 12.1" Multifunction Display

POWERFUL E-SERIES RE-LOADED FEATURES AND PERFORMANCE

- HD and Super HD Digital radar support with new digital radar color palettes, dual range operation and unmatched performance
- 3kW DSM400 HD Digital fishfinder option with support for 200, 50, 38 and 28kHz frequencies
- Improved chartplotting features, including higher resolution Navionics Platinum Plus chart support
- New display and integration features including NMEA2000 trim tab indicator displays
- New SIRIUS Satellite Radio integration. Tune in SIRIUS entertainment direct from the E-Series user interface

CHARTPLOTTER

E-Series combined with Navionics Platinum charts delivers improved situational awareness using 3D bathymetric charts, aerial photo charts and panoramic port photos.

MULTIFUNCTION NETWORKING

The super fast 100 megabit SeaTalk^{hs} network enables simple plug and play connection of multiple E-Series displays and peripherals.

ULTRA BRIGHT COLOR

Powerful backlighting combined with prismatic light enhancing display technology offers unmatched direct sunlight visibility.

E-SERIES RE-LOADED

Powerful multifunction displays, re-loaded with upgrades. E-Series combines 3D chartplotter, fishfinder, radar, video and marine weather in an easy to use networked navigation system.



E120 12.1" Multifunction Display ▲

E80 12.1" Multifunction Display ▼

VIDEO INTEGRATION

Display video from up to four remote sources including Raymarine's marine cameras and satellite TV systems.

MARINE WEATHER

Access up-to-the minute animated forecast information including weather radar, storm tracks, sea surface temperature, wind, surface pressure, wave heights, lightning and much more.

INSTRUMENT INTEGRATION

Connect with Raymarine's SeaTalk and SeaTalk^{ng} networks as well as NMEA 2000 compatible devices.

HD DIGITAL FISHFINDER

Enjoy Raymarine's patented HD Digital sonar technology using the powerful DSM30, DSM300 or DSM400 HD Digital sounder modules.

HD DIGITAL RADAR AND DIGITAL RADOMES

Raymarine radar technology delivers unmatched performance and ease-of-use. Choose from a wide selection of high performance radome and open array scanners.



E80 8.4"
Multifunction Display



E120 12.1"
Multifunction Display

NEW C-SERIES WIDESCREEN

The all new C-Series Widescreen redefines multifunction navigation with larger, brilliant displays, increased performance, expanded networking and video integration. High resolution displays give captains a commanding view of multiple sources of information without compromising readability.



▲ C120W 12.1"
Multifunction Display

▲ C90W 9"
Multifunction Display

GO WIDER

- Theater like widescreen display
- View more navigation data simultaneously
- Make smarter navigation decisions

READY-TO-NAVIGATE

- Internal high sensitivity GPS sensor
- Pre-loaded Navionics charts of the US
- Easy to install and ready-to-navigate right out of the box

EXPANDABLE

- HD Digital network sensors for radar and fishfinder
- Dual display SeaTalk^{hs} networking
- SIRIUS weather and radio compatible
- Video camera input
- AIS compatibility with Buddy Tracking

HIGH DEFINITION

- Widescreen resolutions up to 1280 x 800
- Optically bonded LCD for beautiful color and contrast
- High definition view of 3D charts, satellite photos, HD Digital radar and fishfinder

		
C90W 9" Multifunction Display	C120W 12.1" Multifunction Display	C140W 14.1" Multifunction Display



C140W 14.1"
Multifunction Display ▲

NEW DIGITAL RADOMES

The new RD418D and RD424D radomes offer space saving, high performance radar, using our exclusive low-noise receiver technology and class-leading 8 pulse-width/PRF transmitters. Choose the powerful RD418D 18" radome with 4 kilowatts of output power and a narrow 4.9° horizontal beam width for enhanced target resolution. The larger 4 kW RD424D offers superior resolution with a 3.9° degree beam width. These highly advanced digital radomes are easy to install, thanks to a small diameter inter-unit cable for both power and SeaTalk^{hs} networking.



RD418D



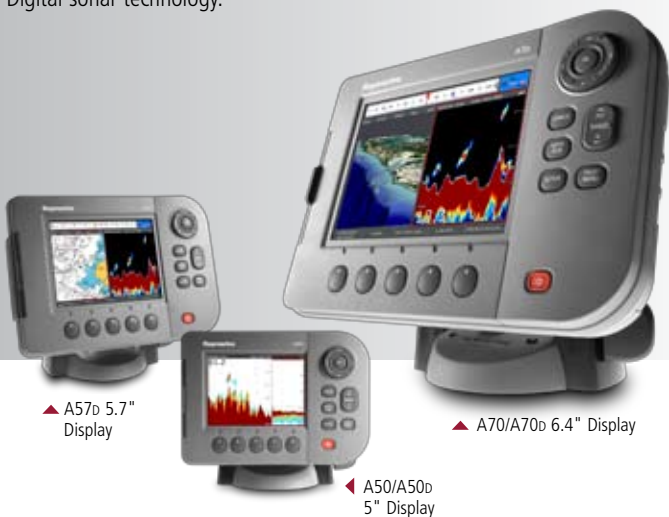
RD424D



A | S E R I E S

NEW A-SERIES. UP YOUR GAME.

Navigate like a pro using high resolution 2D, 3D and aerial photo charts and target fish with unprecedented clarity using Raymarine's unmatched HD Digital sonar technology.



▲ A57d 5.7" Display

▲ A70/A70d 6.4" Display

▲ A50/A50d 5" Display

POWERFUL CHARTPLOTTING

A-Series chartplotters are available pre-loaded with ready-to-navigate Navionics charts of the coastal U.S. or inland lakes and rivers. Step up to even greater chart detail and features with optional Navionics chart cards.

UNMATCHED HD DIGITAL FISHFINDER

A-Series chartplotter/fishfinders offer superior fish detection and bottom discrimination using Raymarine's unmatched HD Digital sonar technology. The HD Digital fishfinder built into the A50d, A57d and A70d instantly adapts to changing seabed and water conditions providing fully automatic "hands off" operation.

ULTRA WIDE FANBEAM TRANSDUCER OPTION



Engineered for shallow water, the Fan Beam transducer delivers an extra wide view of the bottom. The beam can be rotated fore and aft or port and starboard with a rotary beam control built right into the transducer housing.

KEY FEATURES

- SIRIUS Marine Weather and Radio
- AIS (Automatic Identification System) target tracking
- Virtual engine instruments
- SeaTalk^{ng} and NMEA2000

Raymarine[®]

LIT82292 - 0109

Learn about all our new products. Go to www.raymarine.com

AUTOPILOT

SMARTPILOT X-SERIES

Sailing, fishing or cruising, SmartPilot X-Series (SPX Series) autopilots offer the sophisticated performance and innovative features that demanding skippers appreciate. At the core of the SmartPilot X-Series autopilots are newly engineered course computers and the new ST70 color autopilot control head. This powerful combination of SmartPilot X-Series course computer technology and the elegant simplicity of the ST70 control head offers captains innovative new features, precision course keeping and reliable performance.

KEY FEATURES:

- ST70 color control head option
- Nine pre-programmed automatic steering patterns for anglers
- Accurate course keeping without the need for a rudder reference sensor

BELOW DECK SMARTPILOT X-SERIES

An extra crew member at your command, the SmartPilot X-Series range of autopilots offers a choice of several rugged course computers and powerful drive unit configurations to fit a wide range of vessels. At the heart of every system is the X-Series course computer. Each SmartPilot X-Series course computer is equipped with a rate gyro sensor for accurate performance using Raymarine's AST™ (Advanced Steering Technology). With AST, SmartPilots automatically learn the vessel's steering characteristics, offering simpler setup and improved course keeping.



ST70 AUTOPILOT CONTROL HEAD

Raymarine autopilot control heads offer rugged versatility and ease of use. The all new ST70 color autopilot control head has advanced features and intuitive operation when combined with an SPX course computer.



ST70 Autopilot

DRIVE UNITS

Raymarine drive units are engineered for maximum performance and reliability. Drive units are available for hydraulic, mechanical and cable steered power and sail boats.



Hydraulic Drive Unit



Linear Drive Unit



ST70 Autopilot
& X-10 course computer

SMARTPILOT X-5 WHEEL AND TILLER PILOTS

The SmartPilot X-5 Wheel and SmartPilot X-5 Tiller Pilots combine SmartPilot X-Series technology and performance with easy-to-install, cockpit mounted autopilot drives.

SMARTPILOT X-5 SPORT

Using an innovative helm-mounted drive unit, the SmartPilot X-5 Sport is an easy to install autopilot system for powerboats up to 30' in length.

TILLER PILOTS

Raymarine Tiller Pilots let you handle the sheets, while the pilot intelligently keeps the boat on track. Standard features include GPS waypoint navigation, Raymarine's intuitive 6-button Autohelm® keypad and a backlit LCD display.

WIRELESS CONTROLLERS

The "must have" upgrade to every Raymarine autopilot, the S100 and SmartController put wireless autopilot control in the palm of your hand.



SmartController



SmartPilot X-5 Sport



ST6002 Control Head

INSTRUMENTS

Raymarine instruments have set the standard for integrated instrument systems. Designed to be both flexible and expandable using our innovative SeaTalk integration technology, Raymarine instruments offer a complete solution for every helm or cockpit.

KEY FEATURES

- Bright, bold, easy-to-read displays
- SeaTalk and SeaTalk^{ng} networking technology enables multiple display and repeater possibilities
- Seamless integration with Raymarine multifunction displays and autopilots

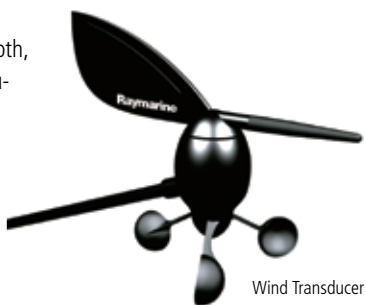


ST40

A large-razor sharp display, along with simple three button controls, ST40 is the choice for boaters looking for high performance in a small package. The ST40 series offers dedicated depth, speed, wind and compass instruments as well the dual function (depth/speed) bidata display.

ST60 PLUS

Award winning ST60 Plus instruments are engineered for maximum visibility from every direction, day and night. Bright, backlit liquid crystal displays feature large, bold characters and color coded analog displays are easy to interpret at a glance. Years of experience combined with rigorous testing and standards ensures ST60 Plus will meet the demands of the most challenging conditions.



Wind Transducer

ST70 MULTIFUNCTION

The ST70 multifunction instrument offers a brand new way of visualizing instrumentation. Featuring a graphical user interface and a bright, high resolution color display, ST70 provides unmatched versatility and ease of use. Designed for simple setup and extensive customization, ST70 offers an array of intuitive digital, analog, graphical and historical display options.



ST70 ▲

ST70 Plus Keypads ▲

ST70 systems are built on Raymarine's new SeaTalk^{ng} Next Generation data bus. A fast CAN based network, SeaTalk^{ng} enables the simple inter-connection of multiple ST70 instruments, transducers and NMEA2000 compatible devices.

**NEW ST70 PLUS
HIGH PERFORMANCE INSTRUMENT SYSTEM**

The ST70 Plus instrument display is designed primarily for sail and power-boats over 40' and is the perfect partner for Raymarine multifunction display systems. The large, high visibility, 6.5" LCDs are ideal for installations where information is viewed at a distance, mounted on the mast or on a large bridge, or if you simply want to view information in a large format at close range at the navigation station or helm. Remote keypads provide control to instrument and autopilot functions. Eye popping graphical data displays are easily customized with 25 screen layout options.



VHF



RAYMARINE VHF RADIOS

From ultra compact to modular VHF radio systems, Raymarine VHF radios ensure that you will be heard loud and clear.

- DSC Digital Selective Calling available
- Rugged waterproof construction
- World class performance backed by a three year warranty

RAY218

The Ray218 is Raymarine's premier fixed mount VHF radio. Delivering exceptional performance and style, the Ray218 includes a long list of standard features including Class D Digital Selective Calling, a built-in hailer and chartplotter position polling. Expand the Ray218 with the powerful Raymic remote handset.

RAY240

The RAY240 is a modular VHF radio system with Digital Selective Calling, optional second station control, and hailer/fog horn capability. A convenient mobile phone style handset is combined with a remote speaker for crystal clear audio. The radio's standard Class D, Digital Selective Calling capability enables you to transmit vital information including your boat's identification, position and time of distress using Raymarine SeaTalk or NMEA 0183 data from your GPS.

RAY49 & 55

Simple and compact, the Ray49 and Ray55 are engineered to deliver reliable VHF performance in the harshest conditions. Both radios are fully submersible and are well-equipped with features like programmable scan, Tri watch and NOAA weather alert. They both offer Class D Digital Selective Calling capability as a standard feature.

SATELLITE TV



SATELLITE TELEVISION ANTENNA SYSTEMS

- HD (High Definition) television compatible models available*
- Dual LNB design supports multiple receivers
- Wide Range Search (WRS) for faster satellite I.D. and acquisition
- Dynamic Beam Tilting (DBT) technology for extreme weather and sea conditions.

37STV SATELLITE TV ANTENNA SYSTEM

Choose the HD ready 37STV for maximum performance in a small foot print. The space saving design of the 37STV makes this antenna ideal for vessels 25' and up. NMEA 0183 GPS interface ensures rapid satellite acquisition times. Fewer cables make installation much easier.

45STV SATELLITE TV ANTENNA SYSTEM

The 45STV Satellite Television Antenna System brings Raymarine performance and quality to on board entertainment. Featuring a stylish and compact dome, the 45STV provides uninterrupted satellite television reception in almost any condition.

60STV SATELLITE TV ANTENNA SYSTEM

The 60STV Satellite Television Antenna System from Raymarine offers unmatched antenna performance and style. Engineered for larger vessels (50' and up), the 60STV delivers enhanced signal acquisition for a clear picture and reliable access to hundreds of channels of digital entertainment. The high performance 60STV extends the range of satellite coverage and offers enhanced satellite tracking in regions prone to weaker satellite signals.

*DIRECTV service only for HD

RAYTECH RNS 6.1



ADVANCED PC NAVIGATION SOFTWARE SUITE

Powerful electronic charting system with support for raster, vector, 3D and satellite photo cartography.

KEY FEATURES

- Super HD Digital Radar support
- Raster, Vector, 3D and Aerial Photo chartplotting
- Transform your PC into a Raymarine Multifunction Navigation display using SeaTalk^{hs} networking and Raymarine E-Series or G-Series
- Download the free RayTech Planner at www.raymarine.com

CLASS B AIS



NEW AIS500 CLASS B TRANSCEIVER

See and be seen with the Class B AIS500 transceiver. Integrates with Raymarine multifunction displays and broadcasts your vessel tracking data to listening AIS receivers, like the AIS250 receiver.

KEY FEATURES

- Improve collision avoidance
- Enhance situational awareness
- Activate silent mode direct from the MFD interface
- Easy-to-integrate with SeaTalk^{ng}, NMEA0183 multiplexer, and VHF splitter
- Includes dedicated external GPS sensor



WIRELESS MAN OVERBOARD SYSTEM

KEY FEATURES

- Wireless technology detects when a crew member goes out of range (typically 30 feet)
- For crew, family, friends and pets. Easy-to-wear and simple-to-use
- LifeTag can be manually activated by pressing the red MOB button
- Additional LifeTag system packs can extend the range of coverage on larger boats

WARNING: The Raymarine LifeTag System is an aid to crew safety only. It should not be relied upon as the vessel's main crew safety system. It is the responsibility of the Captain and all crew members to ensure that specific safety instructions and procedures are in place and obeyed in accordance with local safety requirements. Failure to operate this system in accordance with the operating instructions may result in unreliable or reduced system performance.

CAMERAS



CAM50 DOME CAMERA & CAM100 DAY/NIGHT CAMERA

High performance marine camera solutions transform Raymarine multifunction displays into video observation systems

KEY FEATURES

- Ideal for monitoring blind spots, decks, engine room, salon and crew
- Plug and play with Raymarine G-Series, E-Series and C-Series Widescreen
- Excellent color reproduction
- High quality imager
- Reverse image versions available