

HIGH PERFORMANCE MULTIFUNCTION DISPLAYS



Our most powerful multifunction displays, Raymarine E-Series delivers chartplotter, fishfinder, radar and video in an easy to use networked navigation system. Featuring ultra bright displays, a customizable navigation interface and super fast networking, E-Series sets the new standard for integrated marine electronics.

POWERFUL GRAPHICS

A built in graphics coprocessor delivers brilliant video and amazing 3D chartplotter graphics.

ULTRA BRIGHT COLOR

Prismatic light enhancing display technology combined with high bright backlighting provides crisp, ultra bright color even in tropical sunlight.



CHARTPLOTTER



CHARTPLOTTER FEATURES

- Navionics® Platinum and Platinum Plus multi-dimensional chart support
- Fast chart redraw and 3D chart rendering using a built in graphics coprocessor
- Raymarine SmartRoute™ automatically converts tracks into waypoints organized in a route
- Graphical compass steering bar display
- Animated tides and current display
- Relative, True Motion and AutoZoom modes
- 1250 waypoints and 125 routes with unlimited route, waypoint and track storage using optional CompactFlash memory cards
- Extreme accuracy using Raystar125 WAAS SDGPS sensor
- Display DSC position reports on screen from DSC VHF equipped vessels
- AIS (Automatic Identification System) target tracking (external NMEA 0183 compatible AIS receiver required)
- Support for NAVTEX data from NMEA 0183 compatible NAVTEX receivers



HD DIGITAL™ FISHFINDER



FISHFINDER FEATURES

- Raymarine's patented HD Digital fishfinder technology using a remotely mounted Digital Sounder Module
- Hands-free HD Digital technology automatically adjusts more than 220 sonar parameters per second and virtually eliminates clutter
- HD Digital adaptive receiver technology precisely targets fish and bottom structure with amazing clarity
- 600 or 1000 Watt power output with dual frequency 200/50 KHz operation
- Bottom lock, A-Scope and zoom modes
- Maximum depth of 5000 ft. (1700 meters)  
Note: Actual depth performance may vary due to water, seabed and vessel characteristics
- Full range of high and ultra high performance transducers available

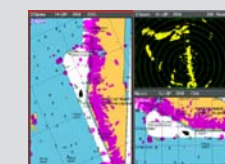


RADAR



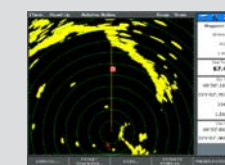
RADAR FEATURES

- Auto GST™ automatic control of gain, sea clutter and tune
- Advanced microprocessor controlled transmitter/receiver and ultra efficient low noise receiver technology
- 1/8th to 72nm max range (Performance limited by the scanner type and position)
- Head up, Course up and North up modes
- Relative or True Motion modes
- Choose between 2 or 4kW radomes or 4 and 10kW open arrays



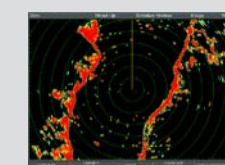
Radar/Chart Overlay

Simplify radar navigation by comparing and reconciling overlaid radar targets with chart objects.



Radar Navigation

Overlay multiple waypoints on the radar and create waypoints directly on the radar display.



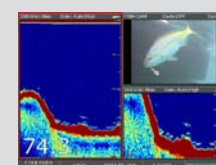
Digital Radar

E-Series supports HD and Super HD Digital radar technology.



Digital Sounder Modules

SeaTalk® network compatible sounder modules deliver high definition digital fishfinding to every display on the network.



Hands Free Operation

HD Digital receiver technology provides auto adaptive control of sensitivity, ping rate and transmit power.



DSM400

3kW HD Digital Sounder module supports 28, 38, 50 and 200 kHz frequencies (requires v4 software or higher).

SIRIUS® MARINE WEATHER AND RADIO



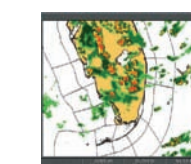
WEATHER FEATURES

- Live up-to-the-minute weather forecasts from SIRIUS® Satellite Radio Marine Weather Service
- Simply connect the SR100 SIRIUS receiver module to the SeaTalk® network to transform every E-Series display into an on board weather center
- Tune in over 130 channels of SIRIUS Satellite Radio

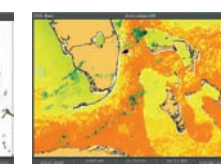
ON BOARD FORECAST DATA INCLUDES:

- NowRad® Weather Radar
- Lightning
- Storm Tracks
- Sea Surface Temperature
- Warnings, observations and buoy reports
- Surface Pressure, Wind and Wave forecast and more

A monthly Sirius® Marine Weather subscription is required. Available only in the U.S.



NowRad® Weather Radar



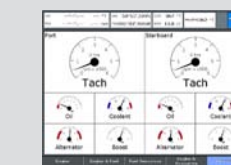
Sea Surface Temperature



Access SIRIUS Satellite radio entertainment

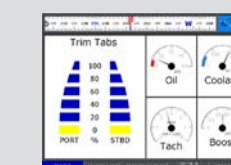
INSTRUMENT & ENGINE DATA FEATURES

- Display tachometer, voltage, oil pressure, fuel and temperature
- Support for both single and dual engines



Engine and Instrument Data

Keep track of engine performance with E-Series virtual engine instruments. Using J1939 or NMEA 2000 protocol, E-Series displays can network with electronic engine instrument systems.



Trim Tab and Tilt Displays

Graphical displays of trim tabs or engine tilt using NMEA2000.

VIDEO



VIDEO FEATURES

- Standard 4 Composite or optional 2 S-Video Inputs
- Full screen or video in a window
- Automatically cycle through each video input at custom intervals
- Video input possibilities: underwater and docking cameras, engine room monitoring, DVD, game consoles and satellite TV



CAM100

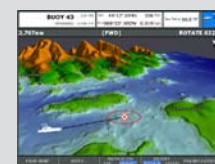
Connect up to four CAM100 on board marine cameras. Improve docking safety by monitoring blind spots or keep track of the engine room and crew from the helm.



SATELLITE TV

Watch TV on an E-Series display when combined with a digital satellite receiver and a Raymarine stabilized antenna system.\*

\* Satellite receiver and subscription sold separately.



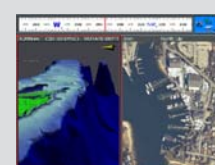
3D Bathymetric Charts

Navigate with 3D charts, depicting bottom contours and terrain topography.



Panoramic Photos

View panoramic photos of popular harbors and approaches with a simple click of the cursor.



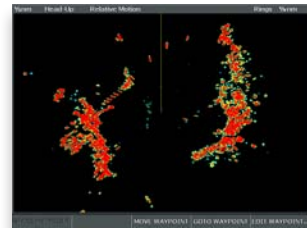
Platinum Plus Charts

Enjoy higher resolution aerial photo charts and improved port photos with Platinum Plus charts.

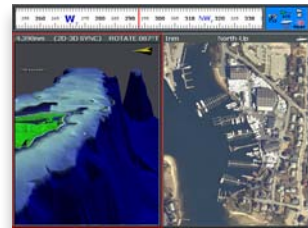


E-SERIES RE-LOADED

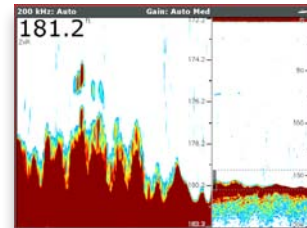
Re-loaded with new features and performance, expanding the power of our award winning multifunction displays.



Super HD and HD Digital™ Radar technology



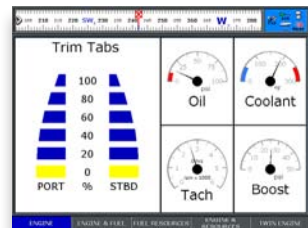
3D and high resolution Platinum Plus chart support



3kW HD Digital™ DSM400 sounder module integration



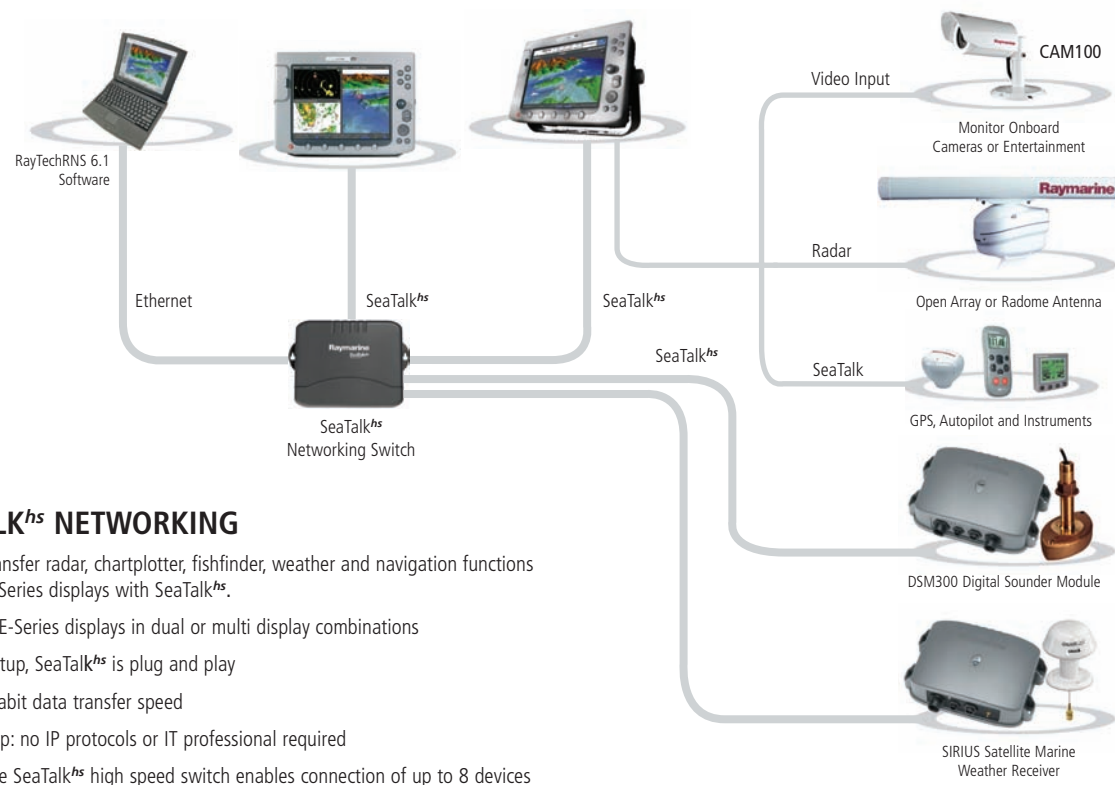
Graphical compass bar and animated tide and currents



Trim Tab and Engine tilt display through NMEA 2000 integration



SIRIUS Satellite Radio tuner. Over 130 channels of entertainment



SEATALK™ NETWORKING

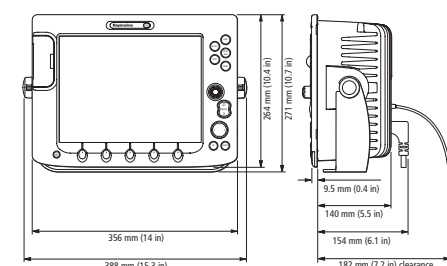
Instantly transfer radar, chartplotter, fishfinder, weather and navigation functions between E-Series displays with SeaTalk™.

- Network E-Series displays in dual or multi display combinations
- Simple setup, SeaTalk™ is plug and play
- 100 Megabit data transfer speed
- Easy Setup: no IP protocols or IT professional required
- Raymarine SeaTalk™ high speed switch enables connection of up to 8 devices on the network

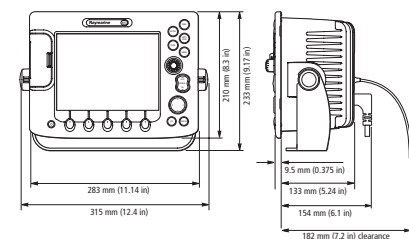


	E80	E120
Weight	9.2 lbs. (4.18kg)	16.2 lbs.(7.35kg)
Nominal Voltage (volts DC)	12v,24v, systems	
Absolute Voltage Range (volts DC)	10.7 - 32 volts	
Power Consumption (typical) watts	20W	30W
Mounting Methods	Bracket or panel (mounting hardware included)	
Operating Temperature Range	14°F to 122°F (-10°C to +50°C)	
	NMEA0183 in/ out, NMEA 2000, SeaTalk, SeaTalk2, SeaTalk™, Scanner	
Enclosure	Waterproof to CFR46 standards	
Humidity	Up to 95% at 35°C non-condensing	
Interfaces	Raymarine SeaTalk™ Network Port*, Raymarine SeaTalk®, Raymarine SeaTalk2/NMEA 2000 Port, NMEA 0183 in/ out, Raymarine Radar Input	
Video Interfaces	4 Video Inputs (NTSC/PAL) - Composite BNC, Dual 5-VIDEO Input (Optional), 1 Video Output (VGA Connector)	

E120 Dimensions



E80 Dimensions



E-Series Ordering Information

Displays

Part #	Description
E02013	E120 12.4" High Performance Navigation Display
E02011	E80 8.4" High Performance Navigation Display

Remote Keyboards

E05008	Alphanumeric Keypad
E55061	Full function Remote Keyboard (Seataalk2)

GPS Options

E32042	Raystar 125 GPS Sensor
--------	------------------------

Digital Sounder Module

E63069	DSM300 Digital Sounder Visit <a href="http://www.raymarine.com">www.raymarine.com</a> for a complete list of transducer options for the DSM300
--------	---

Radar Options

Part #	Description
E52065	RD218 2KW 18" Radome w/15M Cable
E52067	RD424 4KW 24" Radome w/15M Cable

Open Arrays

T52001-S	55 4kW 4' array
T52013-S	75 4kW 6' array
T52012-S	95 10kW 4' array (24 VDC only)
T52014-S	115 10kW Antenna 6' array (24 VDC only)

Accessories Ordering Information

SeaTalk™ Network Components

Part #	Description
E55058	SeaTalk™ High Speed 8 Port Network Switch (for networking more than 2 devices)
E55060	SeaTalk™ Crossover Coupler (for connecting two devices with no network switch)

Cables

E55049	SeaTalk™ Network Cable 1.5M
E55050	SeaTalk™ Network Cable 5M
E55051	SeaTalk™ Network Cable 10M
E55052	SeaTalk™ Network Cable 20M

Video Accessories

E03007	CAM100 Video Camera (NTSC)
E55062	Video in (S-Video)
E55055	Video Out Cable 10M
E55056	Video Out Cable 20M
E02009	M1500 15" Marine Monitor

NMEA Accessories

E55059	NMEA 0183 Multiplexer
--------	-----------------------

SIRIUS Marine Weather Option

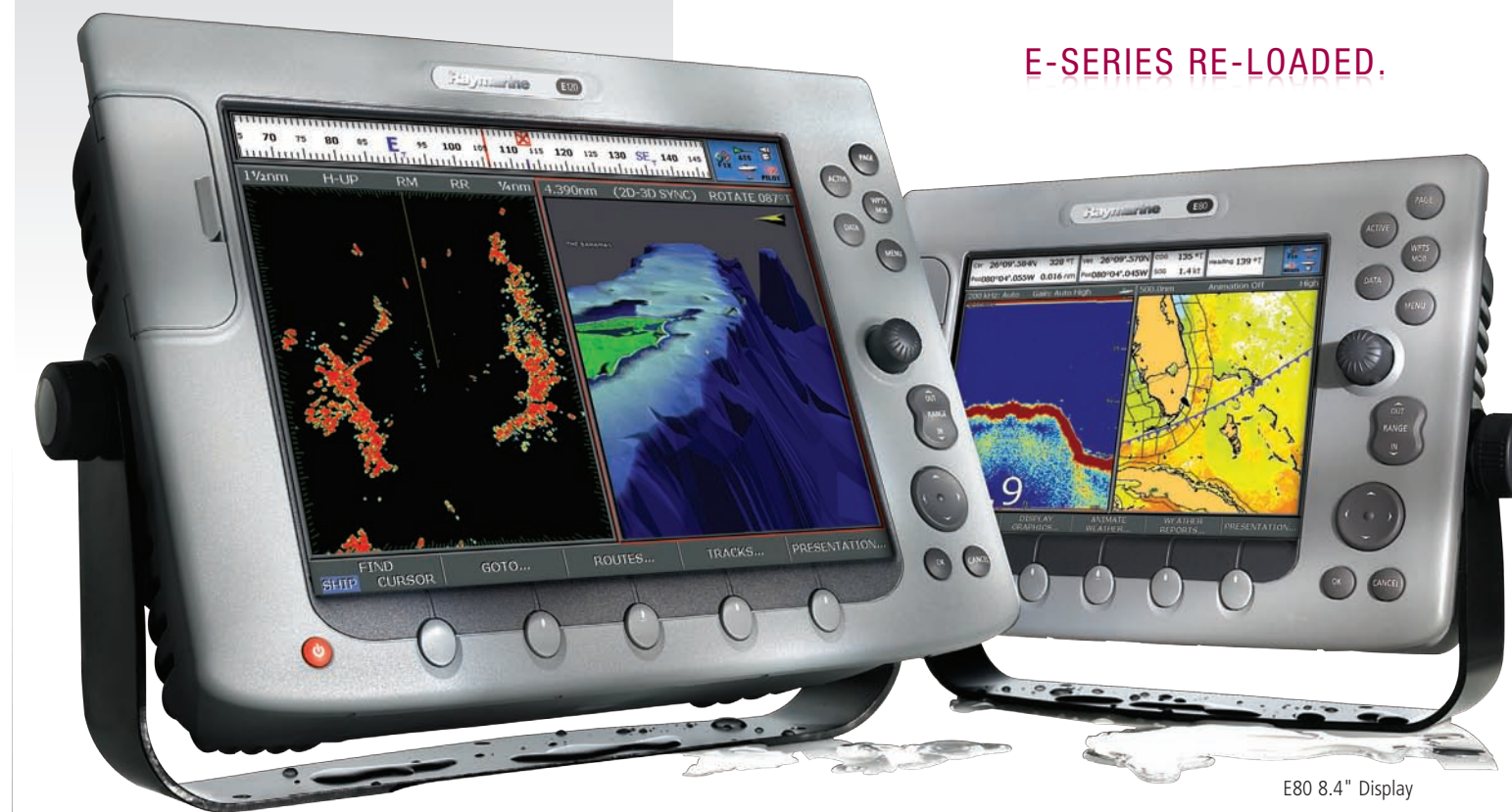
E03009	SR100 - Sirius Weather Receiver Module
--------	--

P.C. Option

E83040	RayTechRNS 6.0 (Full)
E83041	RayTechRNS 6.0 (Upgrade)

High Performance Multifunction Navigation Displays

- E80 8.4" Display
- E120 12.1" Display



E120 12.1" Display

E80 8.4" Display

E-SERIES RE-LOADED.