

SOFTWARE

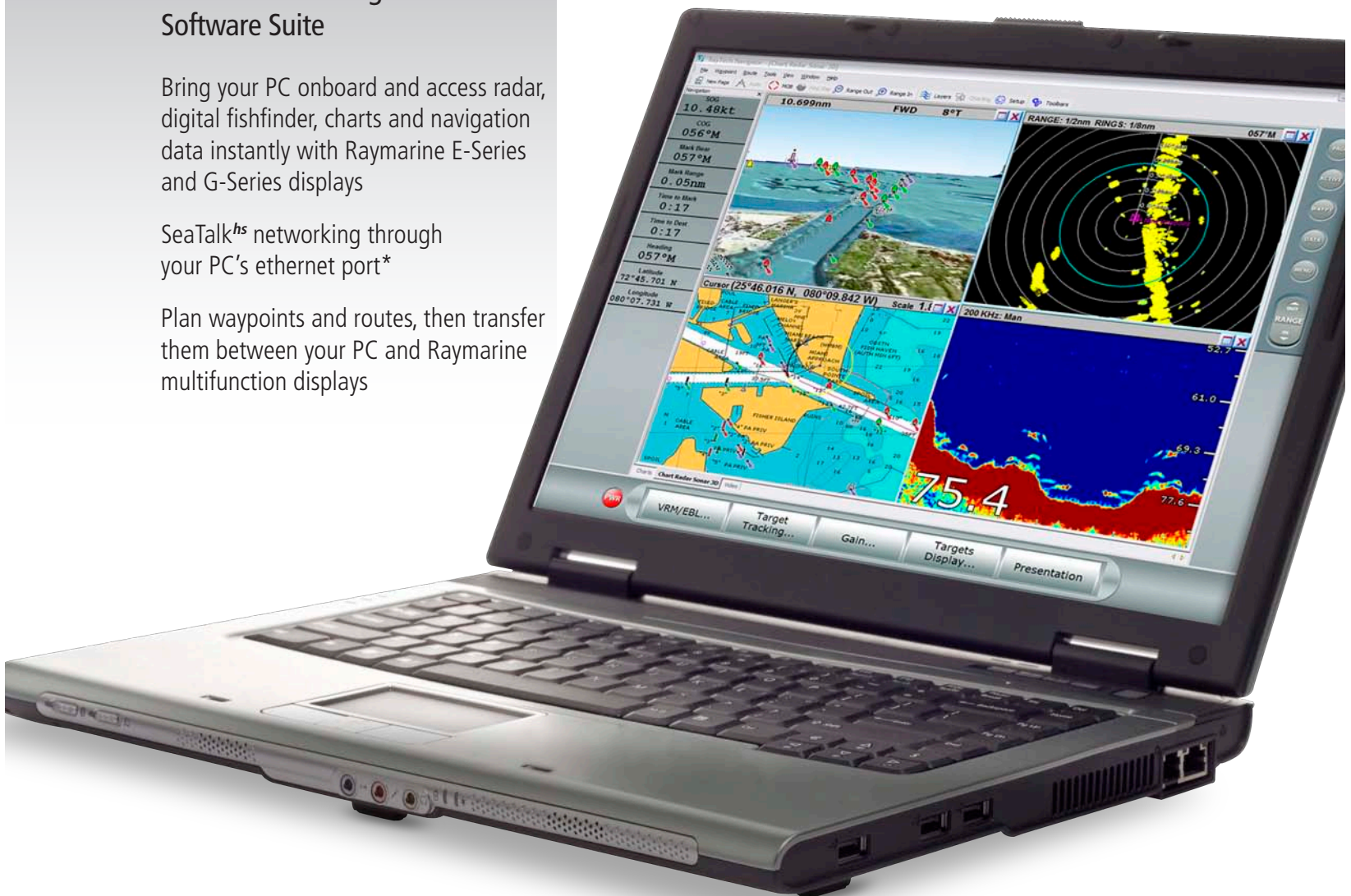
RayTechRNS 6.1

Advanced PC Navigation Software Suite

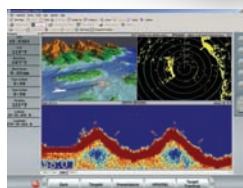
Bring your PC onboard and access radar, digital fishfinder, charts and navigation data instantly with Raymarine E-Series and G-Series displays

SeaTalk^{hs} networking through your PC's ethernet port*

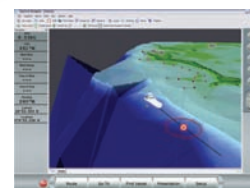
Plan waypoints and routes, then transfer them between your PC and Raymarine multifunction displays



Overlay aerial photos on top of vector or raster charts



Network with Raymarine radars and HD Digital™ fishfinders



3D Navigation with Navionics Platinum Plus

SOFTWARE

NEW IN 6.1

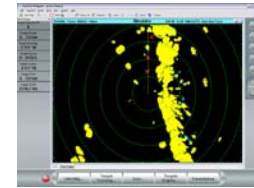
- Integration with Raymarine G-Series navigation systems through SeaTalk^{hs}*
- Windows Vista compatibility*
- Network with Raymarine's new HD and Super HD Digital radars
- Raymarine DSM400 HD Digital Sounder Module support
- AIS Target tracking through NMEA 0183 or SeaTalk^{hs}

KEY FEATURES

- A simple, ethernet connection between the PC and Raymarine's SeaTalk^{hs} network allows the captain to access and share radar, HD Digital™ fishfinder, charts and navigation data instantly with Raymarine's E-Series and G-Series
- Customizable user interface
- Animated GRIB weather forecasts overlay
- Sea surface temperature and plankton data overlays (subscription required)
- Navigation and tactical sailing tools
- DataTrak time-based graphs
- Polar data collection and analysis
- Route optimization



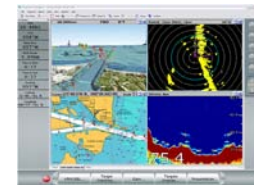
NEW 3D Charts using Platinum Plus



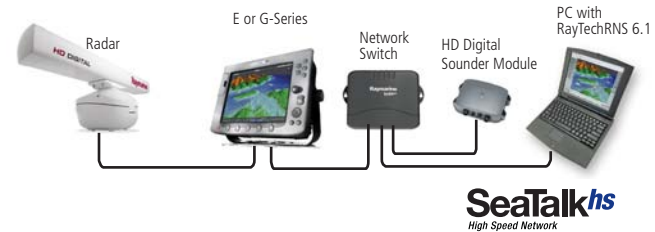
NEW Super HD Digital Radar Support



NEW AIS Target Tracking

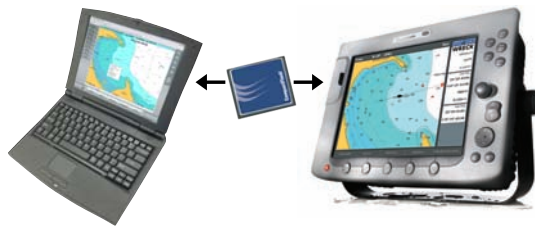


Transform your PC into a Raymarine Multifunction Navigation display



RAYTECH PLANNER

Limited version of RayTechRNS 6.1 software designed for planning and transferring waypoints and routes, between your PC and Raymarine chartplotters and multifunction displays.



RayTechRNS 6.1 is designed for Windows XP and Vista. Please visit www.raymarine.com for complete system requirements.

*SeaTalk^{hs} networking compatible with Windows XP only

G-SERIES INTEGRATION

RayTechRNS 6.1 is designed to integrate with Raymarine's G-Series Navigation Systems. Network a RayTech enabled PC with G-Series to access charting, digital radar and fishfinder from the ship's PC. Plus the versatile G-Series Marine Displays feature additional DVI and VGA inputs for accessing the PC display directly from the helm.



RayTechRNS 6.1 Ordering Info.	
PART #	DESCRIPTION
E112111	RayTech RNS V6.1 (Full Version)
E112112	RayTech RNS V6.1 (Upgrade Version)
E112113	RayTech Planner

Raymarine®

Raymarine Inc.
21 Manchester Street
Merrimack, NH 03054
USA
Tel: 603.881.5200
Fax: 603.864.4756
www.raymarine.com

Raymarine plc
Anchorage Park
Portsmouth, Hampshire PO6 3TD
United Kingdom
Tel: +44 (0)23 9269 3611
Fax: +44 (0)23 9269 4642
www.raymarine.com

Additional information, specifications and interactive product tours available online at www.raymarine.com



Product specifications subject to change without notice